

## Product datasheet for **TP302395M**

### **CSTP1 (CPPED1) (NM\_018340) Human Recombinant Protein**

#### **Product data:**

**Product Type:** Recombinant Proteins

**Description:** Recombinant protein of human calcineurin-like phosphoesterase domain containing 1 (CPPED1), transcript variant 1, 100 µg

**Species:** Human

**Expression Host:** HEK293T

**Expression cDNA Clone or AA Sequence:** >RC202395 protein sequence  
**Red**=Cloning site **Green**=Tags(s)

MSAAEAGGVFHRARGRTLDAFPAEKESSEWKGPFFYFILGADPQFGLIKAWSTGDCDNGGDEWEQEIRLTEQ  
AVQAINKLNPKPKFFVLCGDLIHAMPGKPWRTEQTEDLKRVLRAVDRAIPLVLVSGNHDIGNTPTAETVE  
EFCRTWGDDYFSFWVGGVLFVLNSQFYENPSKCPSLKQAQDQWLDEQLSIARQRHCQHAIVFQHIFLFL  
ESIDEDDDYFNLKSTRKKLADKFIHAGVRRVVFSGHYHRNAGGTYQNLDMVSSAIGCQLGRDPHGLRV  
VVTAEKIVHRYYSLELSEKGIEDDLMDLIKKK

**SGP**TRTRPLE**QKLISEEDLAANDILDYKDDDDK**V

**Tag:** C-Myc/DDK

**Predicted MW:** 35.4 kDa

**Concentration:** >0.05 µg/µL as determined by microplate BCA method

**Purity:** > 80% as determined by SDS-PAGE and Coomassie blue staining

**Buffer:** 25 mM Tris-HCl, 100 mM glycine, pH 7.3, 10% glycerol

**Preparation:** Recombinant protein was captured through anti-DDK affinity column followed by conventional chromatography steps.

**Note:** For testing in cell culture applications, please filter before use. Note that you may experience some loss of protein during the filtration process.

**Storage:** Store at -80°C.

**Stability:** Stable for 12 months from the date of receipt of the product under proper storage and handling conditions. Avoid repeated freeze-thaw cycles.

**RefSeq:** [NP\\_060810](#)

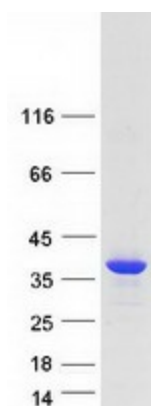
**Locus ID:** 55313



[View online »](#)

UniProt ID:	<a href="#">Q9BRF8</a>
RefSeq Size:	6156
Cytogenetics:	16p13.12
RefSeq ORF:	942
Synonyms:	CSTP1
Summary:	Protein phosphatase that dephosphorylates AKT family kinase specifically at 'Ser-473', blocking cell cycle progression and promoting cell apoptosis. May play an inhibitory role in glucose uptake by adipocytes.[UniProtKB/Swiss-Prot Function]

### Product images:



Coomassie blue staining of purified CPPED1 protein (Cat# [TP302395]). The protein was produced from HEK293T cells transfected with CPPED1 cDNA clone (Cat# [RC202395]) using MegaTran 2.0 (Cat# [TT210002]).