

Product datasheet for **TP302395L**

CSTP1 (CPPED1) (NM_018340) Human Recombinant Protein

Product data:

Product Type: Recombinant Proteins

Description: Recombinant protein of human calcineurin-like phosphoesterase domain containing 1 (CPPED1), transcript variant 1, 1 mg

Species: Human

Expression Host: HEK293T

Expression cDNA Clone or AA Sequence: >RC202395 protein sequence
Red=Cloning site **Green**=Tags(s)

MSAAEAGGVFHRARGRTLDAFPAEKESEWKGPFFYFILGADPQFGLIKAWSTGDCDNGGDEWEQEIRLTEQ
AVQAINKLNPKPKFFVLCGDLIHAMPGKPWRTEQTEDLKRVLRAVDRAIPLVLVSGNHDIGNTPAETVE
EFCRTWGDDYFSFWVGGVLFVLVNSQFYENPSKCPSLKQAQDQWLDEQLSIARQRHCQHAIVFQHIFLFL
ESIDEDDDYYFNLSKSTRKKLADKFIHAGVRVVFSGHYHRNAGGTYQNLDMVSSAIGCQLGRDPHGLRV
VVTAEKIVHRYYSLELSEKGIEDDLMDLIKKK

SGPTRTRPLE**QKLISEEDLAANDILDYKDDDDK**V

Tag: C-Myc/DDK

Predicted MW: 35.4 kDa

Concentration: >0.05 µg/µL as determined by microplate BCA method

Purity: > 80% as determined by SDS-PAGE and Coomassie blue staining

Buffer: 25 mM Tris-HCl, 100 mM glycine, pH 7.3, 10% glycerol

Preparation: Recombinant protein was captured through anti-DDK affinity column followed by conventional chromatography steps.

Note: For testing in cell culture applications, please filter before use. Note that you may experience some loss of protein during the filtration process.

Storage: Store at -80°C.

Stability: Stable for 12 months from the date of receipt of the product under proper storage and handling conditions. Avoid repeated freeze-thaw cycles.

RefSeq: [NP_060810](#)

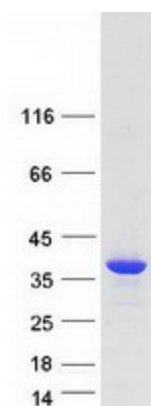
Locus ID: 55313



[View online »](#)

UniProt ID:	Q9BRF8
RefSeq Size:	6156
Cytogenetics:	16p13.12
RefSeq ORF:	942
Synonyms:	CSTP1
Summary:	Protein phosphatase that dephosphorylates AKT family kinase specifically at 'Ser-473', blocking cell cycle progression and promoting cell apoptosis. May play an inhibitory role in glucose uptake by adipocytes.[UniProtKB/Swiss-Prot Function]

Product images:



Coomassie blue staining of purified CPPED1 protein (Cat# [TP302395]). The protein was produced from HEK293T cells transfected with CPPED1 cDNA clone (Cat# [RC202395]) using MegaTran 2.0 (Cat# [TT210002]).