

Product datasheet for TP302395

CSTP1 (CPPED1) (NM_018340) Human Recombinant Protein

Product data:

Product Type:	Recombinant Proteins
Description:	Recombinant protein of human calcineurin-like phosphoesterase domain containing 1 (CPPED1), transcript variant 1, 20 µg
Species:	Human
Expression Host:	HEK293T
Expression cDNA Clone or AA Sequence:	>RC202395 protein sequence Red=Cloning site Green=Tags(s)

MSAAEAGGVFHRARGRTLDAFPAEKESEWKGPFFYFILGADPQFGLIKAWSTGDCDNGGDEWEQEIRLTEQ
AVQAINKLNPKPKFFVLCGDLIHAMPGKPWRTEQTEDLKRVLRAVDRAIPLVLVSGNHDIGNTPAETVE
EFCRTWGDDYFSFWVGGVLFVLNSQFYENPSKCPSLKQAQDQWLDEQLSIARQRHCQHAIVFQHIPLFL
ESIDEDDDYFNLKSTRKKLADKFIHAGVRVVFSGHYHRNAGGTYQNLDMVSSAIGCQLGRDPHGLRV
VVVTAEKIVHRYYSLELSEKGIEDDLMDLIKKK

SGPTRTRPLEQKLISEEDLAANDILDYKDDDDKV

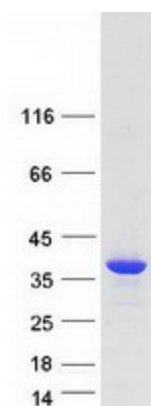
Tag:	C-Myc/DDK
Predicted MW:	35.4 kDa
Concentration:	>0.05 µg/µL as determined by microplate BCA method
Purity:	> 80% as determined by SDS-PAGE and Coomassie blue staining
Buffer:	25 mM Tris-HCl, 100 mM glycine, pH 7.3, 10% glycerol
Preparation:	Recombinant protein was captured through anti-DDK affinity column followed by conventional chromatography steps.
Note:	For testing in cell culture applications, please filter before use. Note that you may experience some loss of protein during the filtration process.
Storage:	Store at -80°C.
Stability:	Stable for 12 months from the date of receipt of the product under proper storage and handling conditions. Avoid repeated freeze-thaw cycles.
RefSeq:	<u>NP_060810</u>
Locus ID:	55313



[View online »](#)

UniProt ID:	Q9BRF8
RefSeq Size:	6156
Cytogenetics:	16p13.12
RefSeq ORF:	942
Synonyms:	CSTP1
Summary:	Protein phosphatase that dephosphorylates AKT family kinase specifically at 'Ser-473', blocking cell cycle progression and promoting cell apoptosis. May play an inhibitory role in glucose uptake by adipocytes.[UniProtKB/Swiss-Prot Function]

Product images:



Coomassie blue staining of purified CPPED1 protein (Cat# TP302395). The protein was produced from HEK293T cells transfected with CPPED1 cDNA clone (Cat# [RC202395]) using MegaTran 2.0 (Cat# [TT210002]).