

Product datasheet for **TP302393L**

ABHD10 (NM_018394) Human Recombinant Protein

Product data:

Product Type:	Recombinant Proteins
Description:	Recombinant protein of human abhydrolase domain containing 10 (ABHD10), 1 mg
Species:	Human
Expression Host:	HEK293T
Expression cDNA Clone or AA Sequence:	>RC202393 protein sequence Red =Cloning site Green =Tags(s)
	 MAVARLAAVAAWVPCRSWGWAAPVFGPHRGLSVLLARIPQRAPRWLPACRQKTSLSFLNRPDLPLNLAYKK LKGKSPGIIFIPGYLSYMNKTKALAIIEFCKSLGHACIRFDYSYGVGSSDGNSEESTLGKWRKDVLSIIDD LADGPQILVGSSLGGWMLHAAIARPEKVVALIGVATAADTLVTKFNQLPVELKKEVEMKGVWVSMPSKYS EEGVYNVQYSFIKEAEHHCLLHSPVNCPIRLLHGMKDDIVPWHTSMQVADRVLSTDVDVILRKHSDHR MREKADIQLLVYTIDDLIDKLSTIVN TRTRPLEQKLISEEDLAANDILDYKDDDDKV
Tag:	C-Myc/DDK
Predicted MW:	33.8 kDa
Concentration:	>0.05 µg/µL as determined by microplate BCA method
Purity:	> 80% as determined by SDS-PAGE and Coomassie blue staining
Buffer:	25 mM Tris-HCl, 100 mM glycine, pH 7.3, 10% glycerol
Preparation:	Recombinant protein was captured through anti-DDK affinity column followed by conventional chromatography steps.
Note:	For testing in cell culture applications, please filter before use. Note that you may experience some loss of protein during the filtration process.
Storage:	Store at -80°C.
Stability:	Stable for 12 months from the date of receipt of the product under proper storage and handling conditions. Avoid repeated freeze-thaw cycles.
RefSeq:	NP_060864
Locus ID:	55347



[View online »](#)

UniProt ID: [Q9NUJ1](#)

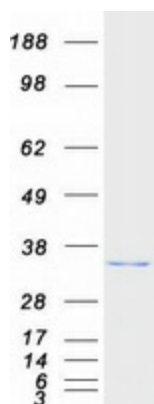
RefSeq Size: 2771

Cytogenetics: 3q13.2

RefSeq ORF: 918

Summary: This gene encodes a mitochondrially-localized enzyme that acts in liver cells as a hydrolase. The encoded protein removes glucuronide from mycophenolic acid acyl-glucuronide. There is a pseudogene for this gene on chromosome 6. Alternative splicing results in multiple transcript variants. [provided by RefSeq, Jan 2013]

Product images:



Coomassie blue staining of purified ABHD10 protein (Cat# [TP302393]). The protein was produced from HEK293T cells transfected with ABHD10 cDNA clone (Cat# [RC202393]) using MegaTran 2.0 (Cat# [TT210002]).