

Product datasheet for **TP302384M**

TMPRSS4 (NM_183247) Human Recombinant Protein

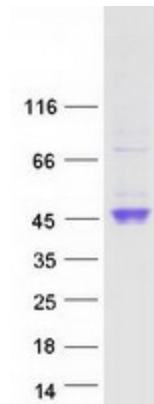
Product data:

| | |
|---------------------------------------|---|
| Product Type: | Recombinant Proteins |
| Description: | Recombinant protein of human transmembrane protease, serine 4 (TMPRSS4), transcript variant 2, 100 µg |
| Species: | Human |
| Expression Host: | HEK293T |
| Expression cDNA Clone or AA Sequence: | >RC202384 protein sequence Red =Cloning site Green =Tags(s) |
| | MDPDSQPLNSLDVKPLRKPRIPMETFRKVGIPHIIALLSLASIIIVVLIKVILDKYYFLCGQPLHFIP RKQLCDGELDCPLGEDEEHCVKSFPEGPAVAVRLSKDRSTLQVLD SATGNWFSACFDNFTEALAEACRQ MGYSSKPTFRAVEIGPDQDL DVVEITENSQELRMRNSSGPCLSGSLVSLHCLACGKSLKTPRVVGEEAS VDSWPWQVSIQYDKQHVC GGSILDPHWLTA AHCFRKHTDVFNWKVRAGSDKLG SFPSLAVAKIIIEFN PMYPKDN DIALMKLQFPLTFSGTVRPICLPFFDEELTPATPLWIIGWGFTKQNGG |
| | TR TRPLEQKLISEEDLAANDILDYKDDDDKV |
| Tag: | C-Myc/DDK |
| Predicted MW: | 37.6 |
| Concentration: | >0.05 µg/µL as determined by microplate BCA method |
| Purity: | > 80% as determined by SDS-PAGE and Coomassie blue staining |
| Buffer: | 25 mM Tris-HCl, 100 mM glycine, pH 7.3, 10% glycerol |
| Preparation: | Recombinant protein was captured through anti-DDK affinity column followed by conventional chromatography steps. |
| Note: | For testing in cell culture applications, please filter before use. Note that you may experience some loss of protein during the filtration process. |
| Storage: | Store at -80°C. |
| Stability: | Stable for 12 months from the date of receipt of the product under proper storage and handling conditions. Avoid repeated freeze-thaw cycles. |
| RefSeq: | <u>NP_899070</u> |
| Locus ID: | 56649 |



[View online »](#)

| | |
|-------------------|--|
| UniProt ID: | Q9NRS4 |
| RefSeq Size: | 1983 |
| Cytogenetics: | 11q23.3 |
| RefSeq ORF: | 1005 |
| Synonyms: | membrane-type serine protease 2; MT-SP2; MT-SP2, TMPRSS3; TMPRSS3; transmembrane protease, serine 4; transmembrane serine protease 3; type II membrane serine protease |
| Summary: | This gene encodes a member of the serine protease family. Serine proteases are known to be involved in a variety of biological processes, whose malfunction often leads to human diseases and disorders. This gene was identified as a gene overexpressed in pancreatic carcinoma. The encoded protein is membrane bound with a N-terminal anchor sequence and a glycosylated extracellular region containing the serine protease domain. Multiple transcript variants encoding different isoforms have been found for this gene. [provided by RefSeq, Jul 2008] |
| Protein Families: | Druggable Genome, Protease, Transmembrane |

Product images:

Coomassie blue staining of purified TMPRSS4 protein (Cat# [TP302384]). The protein was produced from HEK293T cells transfected with TMPRSS4 cDNA clone (Cat# [RC202384]) using MegaTran 2.0 (Cat# [TT210002]).