

## Product datasheet for **TP302373L**

### LSM6 (NM\_007080) Human Recombinant Protein

#### Product data:

Product Type:	Recombinant Proteins
Description:	Recombinant protein of human LSM6 homolog, U6 small nuclear RNA associated (S. cerevisiae) (LSM6), 1 mg
Species:	Human
Expression Host:	HEK293T
Expression cDNA Clone or AA Sequence:	>RC202373 protein sequence <b>Red</b> =Cloning site <b>Green</b> =Tags(s)  MSLRKQTPSDFLKQIIGRPVWVKLNSGVDYRGVLACLDGYMNIQTEEYVNGQLKNKYGDADFIRGNNV LYISTQKRRM  <b>TRTRPLEQKLISEEDLAANDILDYKDDDDKV</b>
Tag:	C-Myc/DDK
Predicted MW:	8.9 kDa
Concentration:	>0.05 µg/µL as determined by microplate BCA method
Purity:	> 80% as determined by SDS-PAGE and Coomassie blue staining
Buffer:	25 mM Tris-HCl, 100 mM glycine, pH 7.3, 10% glycerol
Preparation:	Recombinant protein was captured through anti-DDK affinity column followed by conventional chromatography steps.
Note:	For testing in cell culture applications, please filter before use. Note that you may experience some loss of protein during the filtration process.
Storage:	Store at -80°C.
Stability:	Stable for 12 months from the date of receipt of the product under proper storage and handling conditions. Avoid repeated freeze-thaw cycles.
RefSeq:	<a href="#">NP_009011</a>
Locus ID:	11157
UniProt ID:	<a href="#">P62312</a>
RefSeq Size:	789



[View online »](#)

Cytogenetics: 4q31.22

RefSeq ORF: 240

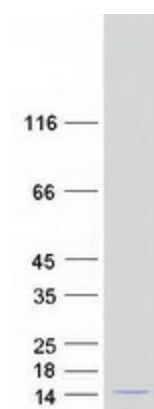
Synonyms: YDR378C

**Summary:** Sm-like proteins were identified in a variety of organisms based on sequence homology with the Sm protein family (see SNRPD2; MIM 601061). Sm-like proteins contain the Sm sequence motif, which consists of 2 regions separated by a linker of variable length that folds as a loop. The Sm-like proteins are thought to form a stable heteromer present in tri-snRNP particles, which are important for pre-mRNA splicing.[supplied by OMIM, Apr 2004]

**Protein Families:** Stem cell - Pluripotency

**Protein Pathways:** RNA degradation, Spliceosome

### Product images:



Coomassie blue staining of purified LSM6 protein (Cat# [TP302373]). The protein was produced from HEK293T cells transfected with LSM6 cDNA clone (Cat# [RC202373]) using MegaTran 2.0 (Cat# [TT210002]).