

Product datasheet for **TP302372L**

ALDH16A1 (NM_153329) Human Recombinant Protein

Product data:

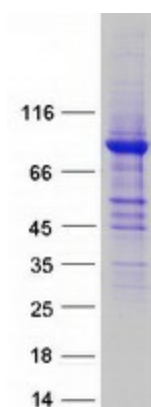
| | |
|---------------------------------------|--|
| Product Type: | Recombinant Proteins |
| Description: | Recombinant protein of human aldehyde dehydrogenase 16 family, member A1 (ALDH16A1), transcript variant 1, 1 mg |
| Species: | Human |
| Expression Host: | HEK293T |
| Expression cDNA Clone or AA Sequence: | >RC202372 protein sequence Red =Cloning site Green =Tags(s) |
| | <p>MAATRAGPRAREIFTSLEYGPVPESHACALAWLDTQDRCLGHVYNGKWLKPEHRNSVPCQDPITGENLAS CLQAQAEVAAAVEAARMAFKGWSAHPGVRAQHLTRLAEVIQKHQRLWTLESVLTGRAVREVRDGDVQ LAQQLLHYHAIQASTQEEALAGWEPMGVIGLILPPTFSFLEMMWRICPALAVGCTVVALVPPASPAPLLL AQLAGELGPFPGILNVVSGPASLVPILASQPGIRKVAFCGAPEEGRALRRSLAGECAELGLALGTESLLL LTDADVDSAVEGWDAAWSDRGPGGLRLLIQESVWDEAMRRLQERMGRRLRSGRGLDGAVDMGARGAAAC DLVQRFVREAQSQAQVFQAGDVPSEPFYPPPTLVSNLPPASPCAQVEVPWPVVVSPFRTAKEALLVAN GTPRGGSSASVWSERLQALELGYGLQVGTWINAHGLRDPVPTGGCKESGCSWHGGPDGLYEYLRPSGT PARLSCLSKNLNYDTFGLAVPSTLPAGPEIGPSPAPPYGLFVGGRFQAPGARSSRPIRDSSGNLHGYYAE GGAKDIRGAVEAAHQAFPGWAGQSPGARAALLWALAAALERRKSTLASRLERQGAELKAAEALEVELSARR LRAWGARVQAQGH TLQVAGLRGPVLRRLREPLGVLAVVCPDEWPLLA FVSL LAPALAYGNTVMMVPSAACP LLALEVCQDMATVFPAGLANVVTGDRDHLTRCLALHQDVQAMWYFGSAQGSQFVEWASAGNLKPVWASRG CPRAWDQEAEGAGPELGLRVARTKALWLPMD</p> <p>TRPLEQKLISEEDLAANDILDYKDDDDKV</p> |
| Tag: | C-Myc/DDK |
| Predicted MW: | 84.9 kDa |
| Concentration: | >0.05 µg/µL as determined by microplate BCA method |
| Purity: | > 80% as determined by SDS-PAGE and Coomassie blue staining |
| Buffer: | 25 mM Tris-HCl, 100 mM glycine, pH 7.3, 10% glycerol |
| Preparation: | Recombinant protein was captured through anti-DDK affinity column followed by conventional chromatography steps. |



[View online »](#)

| | |
|--------------------------|---|
| Note: | For testing in cell culture applications, please filter before use. Note that you may experience some loss of protein during the filtration process. |
| Storage: | Store at -80°C. |
| Stability: | Stable for 12 months from the date of receipt of the product under proper storage and handling conditions. Avoid repeated freeze-thaw cycles. |
| RefSeq: | NP_699160 |
| Locus ID: | 126133 |
| UniProt ID: | Q8IZ83 |
| RefSeq Size: | 3119 |
| Cytogenetics: | 19q13.33 |
| RefSeq ORF: | 2406 |
| Summary: | This gene encodes a member of the aldehyde dehydrogenase superfamily. The family members act on aldehyde substrates and use nicotinamide adenine dinucleotide phosphate (NADP) as a cofactor. This gene is conserved in chimpanzee, dog, cow, mouse, rat, and zebrafish. The protein encoded by this gene interacts with maspardin, a protein that when truncated is responsible for Mast syndrome. Alternatively spliced transcript variants encoding different isoforms have been found for this gene. [provided by RefSeq, Apr 2010] |
| Protein Families: | Druggable Genome |

Product images:



Coomassie blue staining of purified ALDH16A1 protein (Cat# [TP302372]). The protein was produced from HEK293T cells transfected with ALDH16A1 cDNA clone (Cat# [RC202372]) using MegaTran 2.0 (Cat# [TT210002]).