

## Product datasheet for **TP302372**

### ALDH16A1 (NM\_153329) Human Recombinant Protein

#### Product data:

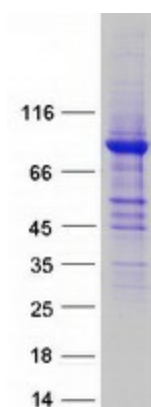
Product Type:	Recombinant Proteins
Description:	Recombinant protein of human aldehyde dehydrogenase 16 family, member A1 (ALDH16A1), transcript variant 1, 20 µg
Species:	Human
Expression Host:	HEK293T
Expression cDNA Clone or AA Sequence:	>RC202372 protein sequence <b>Red</b> =Cloning site <b>Green</b> =Tags(s)
	<p>MAATRAGPRAREIFTSLEYGPVPESHACALAWLDTQDRCLGHYVNGKWLKPEHRNSVPCQDPITGENLAS CLQAQAEVAAAEEAARMAFKGWSAHPGVRAQHLTRLAEVIQKHQRLLWTLESLVTGRAVREVRDGDVQ LAQQLLHYHAIQASTQEEALAGWEPMGVIGLILPPTFSFLEMMWRICPALAVGCTVVALVPPASPAPLLL AQLAGELGPFPGILNVVSGPASLVPILASQPGIRKVAFCGAPEEGRALRRSLAGECAELGLALGTESLLL LTDADVDSAVEGWDAAWSDRGPGGLRLLIQESVWDEAMRRLQERMGRRLRSGRGLDGAVDMGARGAAAC DLVQRFVREAQSQAQVFQAGDVPSEPFYPPPTLVSNLPPASPCAQVEVPWPVVASPFRTAKEALLVAN GTPRGGSSASVWSERLGQALELGYGLQVGTWINAHGLRDPVPTGGCKESGCSWHGGPDGLYEYLRPSGT PARLSCLSKNLNYDTFGLAVPSTLPAGPEIGPSPAPPYGLFVGGRFQAPGARSSRPIRDSSGNLHGYYAE GGAKDIRGAVEAAHQAFPGWAGQSPGARAALLWALAAALERRKSTLASRLERQGAELKAAEALEVELSARR LRAWGARVQAQGH TLQVAGLRGPVLRRLREPLGVLAVVCPDEWPLLA FVSLLAPALAYGNTVMMVPSAACP LLALEVCQDMATVFPAGLANVVTGDRDHLTRCLALHQDVQAMWYFGSAQGSQFVEWASAGNLKPVWASRG CPRAWDQEAEAGPELGLRVARTKALWLPMD</p> <p><b>TRPLEQKLISEEDLAANDILDYKDDDDKV</b></p>
Tag:	C-Myc/DDK
Predicted MW:	84.9 kDa
Concentration:	>0.05 µg/µL as determined by microplate BCA method
Purity:	> 80% as determined by SDS-PAGE and Coomassie blue staining
Buffer:	25 mM Tris-HCl, 100 mM glycine, pH 7.3, 10% glycerol
Preparation:	Recombinant protein was captured through anti-DDK affinity column followed by conventional chromatography steps.



[View online »](#)

<b>Note:</b>	For testing in cell culture applications, please filter before use. Note that you may experience some loss of protein during the filtration process.
<b>Storage:</b>	Store at -80°C.
<b>Stability:</b>	Stable for 12 months from the date of receipt of the product under proper storage and handling conditions. Avoid repeated freeze-thaw cycles.
<b>RefSeq:</b>	<a href="#">NP_699160</a>
<b>Locus ID:</b>	126133
<b>UniProt ID:</b>	<a href="#">Q8IZ83</a>
<b>RefSeq Size:</b>	3119
<b>Cytogenetics:</b>	19q13.33
<b>RefSeq ORF:</b>	2406
<b>Summary:</b>	This gene encodes a member of the aldehyde dehydrogenase superfamily. The family members act on aldehyde substrates and use nicotinamide adenine dinucleotide phosphate (NADP) as a cofactor. This gene is conserved in chimpanzee, dog, cow, mouse, rat, and zebrafish. The protein encoded by this gene interacts with maspardin, a protein that when truncated is responsible for Mast syndrome. Alternatively spliced transcript variants encoding different isoforms have been found for this gene. [provided by RefSeq, Apr 2010]
<b>Protein Families:</b>	Druggable Genome

### Product images:



Coomassie blue staining of purified ALDH16A1 protein (Cat# TP302372). The protein was produced from HEK293T cells transfected with ALDH16A1 cDNA clone (Cat# [RC202372]) using MegaTran 2.0 (Cat# [TT210002]).