

## Product datasheet for **TP302361L**

### SLBP (NM\_006527) Human Recombinant Protein

#### Product data:

**Product Type:** Recombinant Proteins

**Description:** Purified recombinant protein of Homo sapiens stem-loop binding protein (SLBP), 1 mg

**Species:** Human

**Expression Host:** HEK293T

**Expression cDNA Clone  
or AA Sequence:** >RC202361 protein sequence  
**Red**=Cloning site **Green**=Tags(s)

MACRPRSPRRHQSRCDGDASPPSPARWSLGRKRRADGRRWRPEDAEAEHARGAERRPESFTTPEGPKPRS  
RCSDWASAVEEDEMTRVKNEMARYKRKLLINDFGRERKSSGSSDSKESMSTVPADFETDESVLMMRRQK  
QINYGKNTIAYDRIYKEVPRHLRQPGIHPKTPNKFKKYSRRSWDQQIKLWKVALHFWDPPEEGCDLQEI  
HPVDLESAESSSEPQTSSQDDFDVSGTPTKVRHMDSQVEDEFDLEACLTEPLRDFSAMS

**TRTRPLEQKLISEEDLAANDILDYKDDDDKV**

**Tag:** C-Myc/DDK

**Predicted MW:** 31.1 kDa

**Concentration:** >0.05 µg/µL as determined by microplate BCA method

**Purity:** > 80% as determined by SDS-PAGE and Coomassie blue staining

**Buffer:** 25 mM Tris-HCl, 100 mM glycine, pH 7.3, 10% glycerol

**Preparation:** Recombinant protein was captured through anti-DDK affinity column followed by conventional chromatography steps.

**Note:** For testing in cell culture applications, please filter before use. Note that you may experience some loss of protein during the filtration process.

**Storage:** Store at -80°C.

**Stability:** Stable for 12 months from the date of receipt of the product under proper storage and handling conditions. Avoid repeated freeze-thaw cycles.

**RefSeq:** [NP\\_006518](#)

**Locus ID:** 7884

**UniProt ID:** [Q14493](#)



[View online »](#)

RefSeq Size: 1743

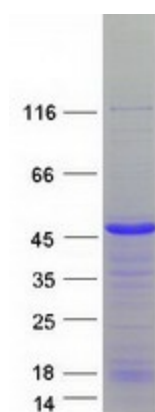
Cytogenetics: 4p16.3

RefSeq ORF: 810

Synonyms: HBP

**Summary:** This gene encodes a protein that binds to the stem-loop structure in replication-dependent histone mRNAs. Histone mRNAs do not contain introns or polyadenylation signals, and are processed by endonucleolytic cleavage. The stem-loop structure is essential for efficient processing but this structure also controls the transport, translation and stability of histone mRNAs. Expression of the protein is regulated during the cell cycle, increasing more than 10-fold during the latter part of G1. [provided by RefSeq, Jul 2008]

### Product images:



Coomassie blue staining of purified SLBP protein (Cat# [TP302361]). The protein was produced from HEK293T cells transfected with SLBP cDNA clone (Cat# [RC202361]) using MegaTran 2.0 (Cat# [TT210002]).