

Product datasheet for **TP302361**

SLBP (NM_006527) Human Recombinant Protein

Product data:

Product Type: Recombinant Proteins

Description: Purified recombinant protein of Homo sapiens stem-loop binding protein (SLBP), 20 µg

Species: Human

Expression Host: HEK293T

**Expression cDNA Clone
or AA Sequence:** >RC202361 protein sequence
Red=Cloning site **Green**=Tags(s)

MACRPRSPRRHQSRCDGDASPPSPARWSLGRKRRADGRRWRPEDAEAEHRGAERRPESFTTPEGPKPRS
RCSDWASAVEEDEMTRVKNEMARYKRKLLINDFGRERKSSGSSDSKESMSTVPADFETDESVLMMRRQK
QINYGKNTIAYDRIYKEVPRHLRQPGIHPKTPNKFKKYSRRSWDQQIKLWKVALHFWDPPAEEGCDLQEI
HPVDLESAESSSEPQTSSQDDFDVSGTPTKVRHMDSQVEDEFDLEACLTEPLRDFSAMS

TRTRPLEQKLISEEDLAANDILDYKDDDDKV

Tag: C-Myc/DDK

Predicted MW: 31.1 kDa

Concentration: >0.05 µg/µL as determined by microplate BCA method

Purity: > 80% as determined by SDS-PAGE and Coomassie blue staining

Buffer: 25 mM Tris-HCl, 100 mM glycine, pH 7.3, 10% glycerol

Preparation: Recombinant protein was captured through anti-DDK affinity column followed by conventional chromatography steps.

Note: For testing in cell culture applications, please filter before use. Note that you may experience some loss of protein during the filtration process.

Storage: Store at -80°C.

Stability: Stable for 12 months from the date of receipt of the product under proper storage and handling conditions. Avoid repeated freeze-thaw cycles.

RefSeq: [NP_006518](#)

Locus ID: 7884

UniProt ID: [Q14493](#), [Q53XR2](#), [B3KSC5](#), [B3KST9](#)



[View online »](#)

RefSeq Size: 1743

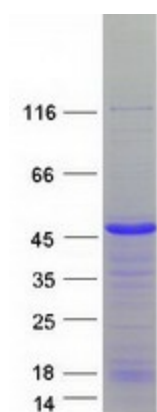
Cytogenetics: 4p16.3

RefSeq ORF: 810

Synonyms: HBP

Summary: This gene encodes a protein that binds to the stem-loop structure in replication-dependent histone mRNAs. Histone mRNAs do not contain introns or polyadenylation signals, and are processed by endonucleolytic cleavage. The stem-loop structure is essential for efficient processing but this structure also controls the transport, translation and stability of histone mRNAs. Expression of the protein is regulated during the cell cycle, increasing more than 10-fold during the latter part of G1. [provided by RefSeq, Jul 2008]

Product images:



Coomassie blue staining of purified SLBP protein (Cat# TP302361). The protein was produced from HEK293T cells transfected with SLBP cDNA clone (Cat# [RC202361]) using MegaTran 2.0 (Cat# [TT210002]).