

Product datasheet for **TP302351M**

BLOC1S2 (NM_001001342) Human Recombinant Protein

Product data:

Product Type:	Recombinant Proteins
Description:	Recombinant protein of human biogenesis of lysosomal organelles complex-1, subunit 2 (BLOC1S2), transcript variant 2, 100 µg
Species:	Human
Expression Host:	HEK293T
Expression cDNA Clone or AA Sequence:	>RC202351 protein sequence Red =Cloning site Green =Tags(s) MFSKMATYLTGELTATSEDYKLENNMNKLTSLKYLEMKDIAINISRNLDLNQKYAGLQPYLDQINVIEE QVAALEQAAYKLDAYSKKLEAKYKKLEKR TRTRPLEQKLISEEDLAANDILDYKDDDDKV
Tag:	C-Myc/DDK
Predicted MW:	11.3 kDa
Concentration:	>0.05 µg/µL as determined by microplate BCA method
Purity:	> 80% as determined by SDS-PAGE and Coomassie blue staining
Buffer:	25 mM Tris-HCl, 100 mM glycine, pH 7.3, 10% glycerol
Preparation:	Recombinant protein was captured through anti-DDK affinity column followed by conventional chromatography steps.
Note:	For testing in cell culture applications, please filter before use. Note that you may experience some loss of protein during the filtration process.
Storage:	Store at -80°C.
Stability:	Stable for 12 months from the date of receipt of the product under proper storage and handling conditions. Avoid repeated freeze-thaw cycles.
RefSeq:	NP_001001342
Locus ID:	282991
UniProt ID:	Q6QNY1
RefSeq Size:	2722



[View online »](#)

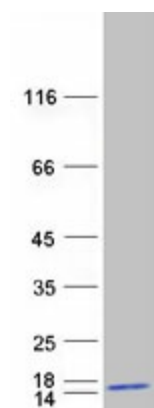
Cytogenetics: 10q24.31

RefSeq ORF: 297

Synonyms: BLOS2; BORCS2; CEAP; CEAP11

Summary: This gene encodes a protein with multiple functions. The encoded protein has been found in association with the centrosome, shown to co-localize with gamma-tubulin, and also found to be one of the proteins in the BLOC-1 complex which functions in the formation of lysosome-related organelles. A pseudogene of this gene is located on the X chromosome. Alternative splicing results in multiple transcript variants. [provided by RefSeq, Feb 2012]

Product images:



Coomassie blue staining of purified BLOC1S2 protein (Cat# [TP302351]). The protein was produced from HEK293T cells transfected with BLOC1S2 cDNA clone (Cat# [RC202351]) using MegaTran 2.0 (Cat# [TT210002]).