

Product datasheet for **TP302346L**

LYRM4 (NM_020408) Human Recombinant Protein

Product data:

Product Type: Recombinant Proteins

Description: Recombinant protein of human LYR motif containing 4 (LYRM4), 1 mg

Species: Human

Expression Host: HEK293T

**Expression cDNA Clone
or AA Sequence:** >RC202346 protein sequence
Red=Cloning site **Green**=Tags(s)

MAASSRAQVLALYRAMLRFSAYNYRRTYAVRRIRDAFRENKNVKDPVEIQTLVNAKRDLDGIVRRQV
HIGQLYSTDKLIENRDMPT

TRTRPLEQKLISEEDLAANDILDYKDDDDKV

Tag: C-Myc/DDK

Predicted MW: 10.6 kDa

Concentration: >0.05 µg/µL as determined by microplate BCA method

Purity: > 80% as determined by SDS-PAGE and Coomassie blue staining

Buffer: 25 mM Tris-HCl, 100 mM glycine, pH 7.3, 10% glycerol

Preparation: Recombinant protein was captured through anti-DDK affinity column followed by conventional chromatography steps.

Note: For testing in cell culture applications, please filter before use. Note that you may experience some loss of protein during the filtration process.

Storage: Store at -80°C.

Stability: Stable for 12 months from the date of receipt of the product under proper storage and handling conditions. Avoid repeated freeze-thaw cycles.

RefSeq: [NP_065141](#)

Locus ID: 57128

UniProt ID: [Q9HD34](#)

RefSeq Size: 1514

Cytogenetics: 6p25.1



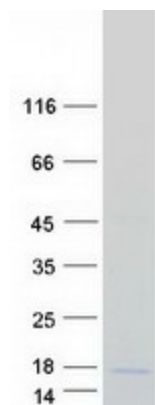
[View online »](#)

RefSeq ORF: 273

Synonyms: C6orf149; CGI-203; COXPD19; ISD11

Summary: The protein encoded by this gene is found in both mitochondria and the nucleus, where it binds cysteine desulfurase and helps free inorganic sulfur for Fe/S clusters. Disruption of this gene negatively impacts mitochondrial and cytosolic iron homeostasis. [provided by RefSeq, Sep 2016]

Product images:



Coomassie blue staining of purified LYRM4 protein (Cat# [TP302346]). The protein was produced from HEK293T cells transfected with LYRM4 cDNA clone (Cat# [RC202346]) using MegaTran 2.0 (Cat# [TT210002]).