

Product datasheet for **TP302343M**

ELMOD2 (NM_153702) Human Recombinant Protein

Product data:

Product Type: Recombinant Proteins

Description: Recombinant protein of human ELMO/CED-12 domain containing 2 (ELMOD2), 100 µg

Species: Human

Expression Host: HEK293T

Expression cDNA Clone or AA Sequence: >RC202343 protein sequence
Red=Cloning site Green=Tags(s)

MFISLWEFFYGHFFRFWMKWLLRQMTGKCELQRIFDITYVGAQRTHRIENSLTYSKNKVLQKATHVVQSEV
DKYVDDIMKEKNINPEKDASFKICMKMCLLQITGYKQLYLDVESVRKRPYSDNLQHELLMKLWLLMP
TKKLNARISKQWAEIGFQGDDPKTDFRGMGILGLINLVYFSENYTSEAHQILSRSNHPKLGYSYAIVGIN
LTEMAYSLKSEALKFHLYNLVPGIPTMEHFHQFYCYLVYEFDKFWFEEEPESIMYFNLYREKFHEKIKG
LLLDCNVALTLKV

TRTRPLEQKLISEEDLAANDILDYKDDDDKV

Tag: C-Myc/DDK

Predicted MW: 34.8 kDa

Concentration: >0.05 µg/µL as determined by microplate BCA method

Purity: > 80% as determined by SDS-PAGE and Coomassie blue staining

Buffer: 25 mM Tris-HCl, 100 mM glycine, pH 7.3, 10% glycerol

Preparation: Recombinant protein was captured through anti-DDK affinity column followed by conventional chromatography steps.

Note: For testing in cell culture applications, please filter before use. Note that you may experience some loss of protein during the filtration process.

Storage: Store at -80°C.

Stability: Stable for 12 months from the date of receipt of the product under proper storage and handling conditions. Avoid repeated freeze-thaw cycles.

RefSeq: [NP_714913](#)

Locus ID: 255520



[View online »](#)

UniProt ID: [Q8IZ81](#)

RefSeq Size: 4425

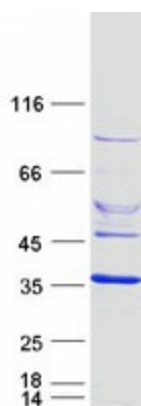
Cytogenetics: 4q31.1

RefSeq ORF: 879

Synonyms: 9830169G11Rik

Summary: This gene encodes one of six engulfment and motility (ELMO) domain-containing proteins. This gene is thought to play a role in antiviral responses. Mutations in this gene may be involved in the cause of familial idiopathic pulmonary fibrosis. [provided by RefSeq, Sep 2010]

Product images:



Coomassie blue staining of purified ELMOD2 protein (Cat# [TP302343]). The protein was produced from HEK293T cells transfected with ELMOD2 cDNA clone (Cat# [RC202343]) using MegaTran 2.0 (Cat# [TT210002]).