

Product datasheet for **TP302342M**

UBLCP1 (NM_145049) Human Recombinant Protein

Product data:

Product Type:	Recombinant Proteins
Description:	Recombinant protein of human ubiquitin-like domain containing CTD phosphatase 1 (UBLCP1), 100 µg
Species:	Human
Expression Host:	HEK293T
Expression cDNA Clone or AA Sequence:	>RC202342 representing NM_145049 Red =Cloning site Green =Tags(s)

MALPIIVKWWGGQEYSVTTLSEDDTVLCLKQFLKTLTGVLPERQKLLGLKVKGKPAENDVKLGALKLPNT
KIMMMGTREESLEDVLGPPPDNDVNDVDFIDIEDEVEVENREENLLKISRRVKEYKVEILNPPREGKLL
VLDVDYTLFDHRSCAETGVELMRPYLHEFLTSAIEDYDIVIWSATNMKWIEAKMKELGVSTNANYKITFM
LDSAAMITVHTPRRGLIDVKPLGVIWGFSEFYKKNITIMFDDIGRNFLMNPQNGLKIRPFMKAHLNRDK
DKELLKLTQYLKEIAKLDDFLDLNHKYWERYLSKKQGG

TRTRPLEQKLISEEDLAANDILDYKDDDDKV

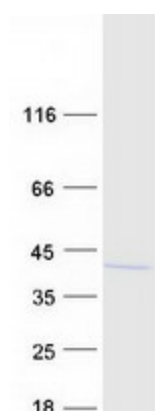
Tag:	C-Myc/DDK
Predicted MW:	36.6 kDa
Concentration:	>0.05 µg/µL as determined by microplate BCA method
Purity:	> 80% as determined by SDS-PAGE and Coomassie blue staining
Buffer:	25 mM Tris-HCl, 100 mM glycine, pH 7.3, 10% glycerol
Preparation:	Recombinant protein was captured through anti-DDK affinity column followed by conventional chromatography steps.
Note:	For testing in cell culture applications, please filter before use. Note that you may experience some loss of protein during the filtration process.
Storage:	Store at -80°C.
Stability:	Stable for 12 months from the date of receipt of the product under proper storage and handling conditions. Avoid repeated freeze-thaw cycles.
RefSeq:	NP_659486
Locus ID:	134510



[View online »](#)

UniProt ID:	Q8WVY7
RefSeq Size:	2178
Cytogenetics:	5q33.3
RefSeq ORF:	954
Synonyms:	CPUB1
Summary:	Dephosphorylates 26S nuclear proteasomes, thereby decreasing their proteolytic activity. The dephosphorylation may prevent assembly of the core and regulatory particles (CP and RP) into mature 26S proteasome.[UniProtKB/Swiss-Prot Function]
Protein Families:	Druggable Genome, Protease

Product images:



Coomassie blue staining of purified UBLCP1 protein (Cat# [TP302342]). The protein was produced from HEK293T cells transfected with UBLCP1 cDNA clone (Cat# [RC202342]) using MegaTran 2.0 (Cat# [TT210002]).