

## Product datasheet for TP302336

### CPVL (NM\_031311) Human Recombinant Protein

#### Product data:

Product Type:	Recombinant Proteins
Description:	Recombinant protein of human carboxypeptidase, vitellogenic-like (CPVL), transcript variant 1, 20 µg
Species:	Human
Expression Host:	HEK293T
Expression cDNA Clone or AA Sequence:	>RC202336 protein sequence Red=Cloning site Green=Tags(s)

MVGAMWKVIVSLVLLMPGPCDGLFRSLYRSVSMPPKGDGSGQPLFLTPYIEAGKIQKGRELSLVGPPFGLN  
MKS YAGFLT VNKTYNSNLFFWFFPAQIQPEDAPVWLWLQGGPGGSSMFGLFVEHGPIYVTSNMTLRDRDF  
PWT T T L S M L Y I D N P V G T G F S F T D D T H G Y A V N E D D V A R D L Y S A L I Q F F Q I F P E Y K N N D F Y V T G E S Y A G K Y V  
P A I A H L I H S L N P V R E V K I N L N G I A I G D G Y S D P E S I I G G Y A E F L Y Q I G L L D E K Q K K Y F Q K Q C H E C I E H I R K  
Q N W F E A F E I L D K L L D G D L T S D P S Y F Q N V T G C S N Y N F L R C T E P E D Q L Y Y V K F L S L P E V R Q A I H V G N Q T F N  
D G T I V E K Y L R E D T V Q S V K P W L T E I M N N Y K V L I Y N G Q L D I I V A A A L T E R S L M G M D W K G S Q E Y K K A E K K V W K  
I F K S D S E V A G Y I R Q V G D F H Q V I I R G G G H I L P Y D Q P L R A F D M I N R F I Y G K G W D P Y V G

TRTRPLEQKLISEEDLAANDILDYKDDDDKV

Tag:	C-Myc/DDK
Predicted MW:	54 kDa
Concentration:	>0.05 µg/µL as determined by microplate BCA method
Purity:	> 80% as determined by SDS-PAGE and Coomassie blue staining
Buffer:	25 mM Tris-HCl, 100 mM glycine, pH 7.3, 10% glycerol
Preparation:	Recombinant protein was captured through anti-DDK affinity column followed by conventional chromatography steps.
Note:	For testing in cell culture applications, please filter before use. Note that you may experience some loss of protein during the filtration process.
Storage:	Store at -80°C.
Stability:	Stable for 12 months from the date of receipt of the product under proper storage and handling conditions. Avoid repeated freeze-thaw cycles.



[View online »](#)

RefSeq: [NP\\_112601](#)

Locus ID: 54504

UniProt ID: [Q9H3G5](#), [A0A024RA40](#)

RefSeq Size: 1691

Cytogenetics: 7p14.3

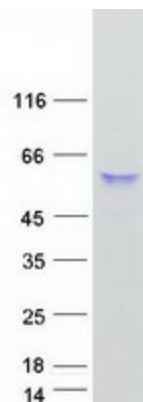
RefSeq ORF: 1428

Synonyms: HVLP

**Summary:** The protein encoded by this gene is a carboxypeptidase and bears strong sequence similarity to serine carboxypeptidases. Carboxypeptidases are a large class of proteases that act to cleave a single amino acid from the carboxy termini of proteins or peptides. The exact function of this protein, however, has not been determined. [provided by RefSeq, Jan 2017]

**Protein Families:** Druggable Genome, Protease

### Product images:



Coomassie blue staining of purified CPVL protein (Cat# TP302336). The protein was produced from HEK293T cells transfected with CPVL cDNA clone (Cat# [RC202336]) using MegaTran 2.0 (Cat# [TT210002]).