

Product datasheet for **TP302335L**

SQOR (NM_021199) Human Recombinant Protein

Product data:

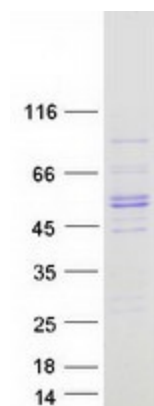
Product Type:	Recombinant Proteins
Description:	Recombinant protein of human sulfide quinone reductase-like (yeast) (SQRDL), nuclear gene encoding mitochondrial protein, 1 mg
Species:	Human
Expression Host:	HEK293T
Expression cDNA Clone or AA Sequence:	>RC202335 protein sequence Red =Cloning site Green =Tags(s)
	<p>MVPLVAVVS GPRAQLFACLLRLGTQQVGPLQLHTGASHAARNHYEVLVLGGGSGGITMAARMKRKVGA EN</p> <p>VAIVPSEHFYQPIWTLVGAGAKQLSSSGRPTASVIPSGVEWIKARVTELNPDKNCIHTDDDEKISYRY LIIALGIQLDYEKIKGLPEGFAHPKIGSNYSVKTEKTKALQDFKEGNAIFTPNTPVKCAGAPQKIMY LSEAYFRKTGKRKANIIFNTSLGAIFGVKKYADALQEIIQERNLTVNYKKNLIEVRADKQEAVFENLDK PGETQVISYEMLHVTPPMSPDVLKTS PVADAAGWVDVDKETLQHRRYPNVFGIGDCTNLPTS KTA AAVA AQSGILDRTISVIMKNQPTTKKYDGYTSCPLVTGYNRVILAEFDYKAEPLETFPFDQSKERLSMYLMKAD LMPFLYWNMMLRGYWGGPAFLRKLFLHGM</p> <p>TRTRPLEQKLISEEDLAANDILDYKDDDDKV</p>
Tag:	C-Myc/DDK
Predicted MW:	49.8 kDa
Concentration:	>0.05 µg/µL as determined by microplate BCA method
Purity:	> 80% as determined by SDS-PAGE and Coomassie blue staining
Buffer:	25 mM Tris-HCl, 100 mM glycine, pH 7.3, 10% glycerol
Preparation:	Recombinant protein was captured through anti-DDK affinity column followed by conventional chromatography steps.
Note:	For testing in cell culture applications, please filter before use. Note that you may experience some loss of protein during the filtration process.
Storage:	Store at -80°C.



[View online »](#)

Stability:	Stable for 12 months from the date of receipt of the product under proper storage and handling conditions. Avoid repeated freeze-thaw cycles.
RefSeq:	<u>NP_067022</u>
Locus ID:	58472
UniProt ID:	<u>Q9Y6N5</u>
RefSeq Size:	2003
Cytogenetics:	15q21.1
RefSeq ORF:	1350
Synonyms:	CGI-44; PRO1975; SQR; SQRDL
Summary:	The protein encoded by this gene may function in mitochondria to catalyze the conversion of sulfide to persulfides, thereby decreasing toxic concentrations of sulfide. Alternative splicing results in multiple transcript variants that encode the same protein. [provided by RefSeq, Sep 2012]
Protein Families:	Druggable Genome

Product images:



Coomassie blue staining of purified SQOR protein (Cat# [TP302335]). The protein was produced from HEK293T cells transfected with SQOR cDNA clone (Cat# [RC202335]) using MegaTran 2.0 (Cat# [TT210002]).