

## Product datasheet for **TP302331**

### **MAGEH1 (NM\_014061) Human Recombinant Protein**

#### **Product data:**

**Product Type:** Recombinant Proteins

**Description:** Recombinant protein of human melanoma antigen family H, 1 (MAGEH1), 20 µg

**Species:** Human

**Expression Host:** HEK293T

**Expression cDNA Clone  
or AA Sequence:** >RC202331 protein sequence  
**Red**=Cloning site **Green**=Tags(s)

MPRGRKSRRRRNARAAEENRNNRRIQASEASETPMAASVASTPEDDLSGPEEDPSTPEEASTTPEEASS  
TAQAQKPSVPRSNFQGTKKSLMSILALIFIMGNSAKEALVWKVLGKLGMPGRQHSIFGDPKKIVTEEF  
VRRGYLIYKPVPRSSPVEYEFFWGPRAHVESKLVKVMHFVARVRNRCSKDWPCNYDWDSDDDAEVEAILN  
SGARGYSAP

**TR**TRPLEQKLISEEDLAANDILDYKDDDDKV

**Tag:** C-Myc/DDK

**Predicted MW:** 24.3 kDa

**Concentration:** >0.05 µg/µL as determined by microplate BCA method

**Purity:** > 80% as determined by SDS-PAGE and Coomassie blue staining

**Buffer:** 25 mM Tris-HCl, 100 mM glycine, pH 7.3, 10% glycerol

**Preparation:** Recombinant protein was captured through anti-DDK affinity column followed by conventional chromatography steps.

**Note:** For testing in cell culture applications, please filter before use. Note that you may experience some loss of protein during the filtration process.

**Storage:** Store at -80°C.

**Stability:** Stable for 12 months from the date of receipt of the product under proper storage and handling conditions. Avoid repeated freeze-thaw cycles.

**RefSeq:** [NP\\_054780](#)

**Locus ID:** 28986

**UniProt ID:** [Q9H213](#)



[View online »](#)

RefSeq Size: 1485

Cytogenetics: Xp11.21

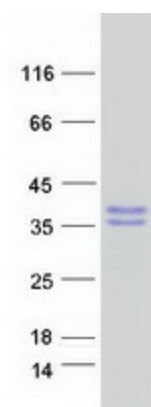
RefSeq ORF: 657

Synonyms: APR-1; APR1; MAGEH

**Summary:** This gene belongs to the non-CT (non cancer/testis) subgroup of the melanoma-associated antigen (MAGE) superfamily. The encoded protein is likely associated with apoptosis, cell cycle arrest, growth inhibition or cell differentiation. The protein may be involved in the atRA (all-trans retinoic acid) signaling through the STAT1-alpha (signal transducer and activator of transcription 1-alpha) pathway. [provided by RefSeq, Aug 2013]

**Protein Families:** Transmembrane

### Product images:



Coomassie blue staining of purified MAGEH1 protein (Cat# TP302331). The protein was produced from HEK293T cells transfected with MAGEH1 cDNA clone (Cat# [RC202331]) using MegaTran 2.0 (Cat# [TT210002]).