

## Product datasheet for TP302326

### DIMT1L (DIMT1) (NM\_014473) Human Recombinant Protein

#### Product data:

Product Type:	Recombinant Proteins
Description:	Recombinant protein of human DIM1 dimethyladenosine transferase 1-like ( <i>S. cerevisiae</i> ) (DIMT1L), 20 µg
Species:	Human
Expression Host:	HEK293T
Expression cDNA Clone or AA Sequence:	>RC202326 protein sequence Red=Cloning site Green=Tags(s)

MPKVKSGAIGRRRGRQEQRRELKSAGGLMFNTGIGQHILKNPLIINSIIDKAALRPTDVVLEVPGTGNM  
TVKLEKAKKVVACELDPRLVAELHKRVQGTPVASKLQVLVGDVLKTDLPFFDTCVANLPYQISSPFVFK  
LLLHRPFFRCAILMFQREFALRLVAKPGDKLYCRLSINTQLLARVDHLMKVGKNNFRPPPKVESSVRIE  
PKNPPPPINFEWDGLVRITFVRKNKTLSSAFKSSAVQQLLEKNYRIHCSVHNIIPEDFSIADKIQIL  
TSTGFSDKRARSMDIDDFIRLLHGFNAEGIHFS

TRTRPLEQKLISEEDLAANDILDYKDDDDKV

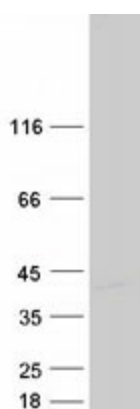
Tag:	C-Myc/DDK
Predicted MW:	35.1 kDa
Concentration:	>0.05 µg/µL as determined by microplate BCA method
Purity:	> 80% as determined by SDS-PAGE and Coomassie blue staining
Buffer:	25 mM Tris-HCl, 100 mM glycine, pH 7.3, 10% glycerol
Preparation:	Recombinant protein was captured through anti-DDK affinity column followed by conventional chromatography steps.
Note:	For testing in cell culture applications, please filter before use. Note that you may experience some loss of protein during the filtration process.
Storage:	Store at -80°C.
Stability:	Stable for 12 months from the date of receipt of the product under proper storage and handling conditions. Avoid repeated freeze-thaw cycles.
RefSeq:	<a href="#">NP_055288</a>
Locus ID:	27292



[View online »](#)

UniProt ID:	<u>Q9UNQ2</u>
RefSeq Size:	1557
Cytogenetics:	5q12.1
RefSeq ORF:	939
Synonyms:	DIM1; DIMT1L; HSA9761; HUSSY5
Summary:	The protein encoded by this gene is a methyltransferase that is responsible for dimethylation of adjacent adenosines near the 18S rRNA decoding site. The encoded protein is essential for ribosome biogenesis, although its catalytic activity is not involved in the process. The yeast ortholog of this protein functions in the cytoplasm while this protein functions in the nucleus. [provided by RefSeq, Jan 2017]
Protein Families:	Druggable Genome

### Product images:



Coomassie blue staining of purified DIMT1 protein (Cat# TP302326). The protein was produced from HEK293T cells transfected with DIMT1 cDNA clone (Cat# [RC202326]) using MegaTran 2.0 (Cat# [TT210002]).