

## Product datasheet for **TP302310M**

### SPG3A (ATL1) (NM\_015915) Human Recombinant Protein

#### Product data:

Product Type:	Recombinant Proteins
Description:	Purified recombinant protein of Homo sapiens atlastin GTPase 1 (ATL1), transcript variant 1, 100 µg
Species:	Human
Expression Host:	HEK293T
Expression cDNA Clone or AA Sequence:	>RC202310 representing NM_015915 <b>Red</b> =Cloning site <b>Green</b> =Tags(s)

MAKNRRDRNSWGGFSEKTYEWSSEEEEPVKKAGPVQVLIVKDEHSFELDETALNRILLSEAVRDKEVVAV  
SVAGAFRKGKSFMDFMLRYMYNQESVDWVG DYNEPLTGFSWRGGSERETTGIIQWSEIFLINKPDGKKV  
AVLLMDTQGTFSQSTLRDSATVFALSTMISSIQVYNLSQNVQEDDLQHLQLCTEYGR LAMEETFLKPFQ  
SLIFLVRDWSFPYEF SYGADGGAKFLEKRLKVSNGNQH EELQNV RKHIHSCFTNISCFLPHPG LKVATNP  
NFDGKLKEIDDEFIKNLKILIPWLLSPESLDIKEINGNKITCRGLVEYFKAYIKIYQGEELPHPKSMLQA  
TAEANNLAAVATAKDTYNKKMEEICGGDKPFLAPNDLQTKHLQLKEESVKLFRGVKMKMGEEFSRRYLQQ  
LESEIDELYIQYIKHNSKNIFHAARTPATLFWVIFITYVIAGVTGFIGLDIIASLCNMIMGLTLITLCT  
WAYIRYSGEYRELGAVIDQVAAALWDQGSTNEALYKLYSAAATHRHLYHQAFPTPKSESTEQSEK KKM

**TRTRPLEQKLISEEDLAANDILDYKDDDDKV**

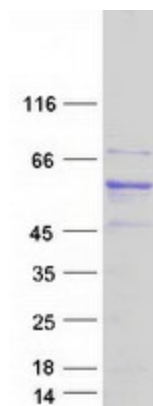
Tag:	C-Myc/DDK
Predicted MW:	63.4 kDa
Concentration:	>0.05 µg/µL as determined by microplate BCA method
Purity:	> 80% as determined by SDS-PAGE and Coomassie blue staining
Buffer:	25 mM Tris-HCl, 100 mM glycine, pH 7.3, 10% glycerol
Preparation:	Recombinant protein was captured through anti-DDK affinity column followed by conventional chromatography steps.
Note:	For testing in cell culture applications, please filter before use. Note that you may experience some loss of protein during the filtration process.
Storage:	Store at -80°C.



[View online »](#)

<b>Stability:</b>	Stable for 12 months from the date of receipt of the product under proper storage and handling conditions. Avoid repeated freeze-thaw cycles.
<b>RefSeq:</b>	<a href="#">NP_056999</a>
<b>Locus ID:</b>	51062
<b>UniProt ID:</b>	<a href="#">Q8WXF7</a> , <a href="#">A0A0S2Z5B0</a> , <a href="#">Q53F53</a>
<b>RefSeq Size:</b>	2271
<b>Cytogenetics:</b>	14q22.1
<b>RefSeq ORF:</b>	1674
<b>Synonyms:</b>	AD-FSP; atlastin1; FSP1; GBP3; HSN1D; SPG3; SPG3A
<b>Summary:</b>	The protein encoded by this gene is a GTPase and a Golgi body transmembrane protein. The encoded protein can form a homotetramer and has been shown to interact with spastin and with mitogen-activated protein kinase kinase kinase 4. This protein may be involved in axonal maintenance as evidenced by the fact that defects in this gene are a cause of spastic paraplegia type 3. Three transcript variants encoding two different isoforms have been found for this gene. [provided by RefSeq, Jul 2008]
<b>Protein Families:</b>	Druggable Genome, Transmembrane

### Product images:



Coomassie blue staining of purified ATL1 protein (Cat# [TP302310]). The protein was produced from HEK293T cells transfected with ATL1 cDNA clone (Cat# [RC202310]) using MegaTran 2.0 (Cat# [TT210002]).