

Product datasheet for **TP302310**

SPG3A (ATL1) (NM_015915) Human Recombinant Protein

Product data:

Product Type:	Recombinant Proteins
Description:	Purified recombinant protein of Homo sapiens atlastin GTPase 1 (ATL1), transcript variant 1, 20 µg
Species:	Human
Expression Host:	HEK293T
Expression cDNA Clone or AA Sequence:	>RC202310 representing NM_015915 Red =Cloning site Green =Tags(s)

MAKNRRDRNSWGGFSEKTYEWSSEEEEPVKKAGPVQVLIVKDEHSFELDELTALNRILLSEAVRDKEVVAV
SVAGAFRKGKSFMDFMLRYMYNQESVDWVGDYNEPLTGFSWRGGSERETTGIIQWSEIFLINKPDGKKV
AVLLMDTQGTFSQSTLRDSATVFALSTMISSIQVYNLSQNVQEDDLQHLQLCTEYGRAMEETFLKPFQ
SLIFLVRDWSFPYEFYSGADGGAKFLEKRLKVSNGHQHEELQNRKHIHSCFTNISCFLPHPLKLVATNP
NFDGKLEIDDEFIKNLKILIPWLLSPESLDIKEINGNKITCRGLVEYFKAYIKIYQGEELPHPKSMLQA
TAEANNLAAVATAKDTYNKKMEEICGGDKPFLAPNDLQTKHLQLKEESVKLFRGVKMKMGEEFSRRYLQQ
LESEIDELYIQYIKHNSKNIFHAARTPATLFWVIFITYVIAGVTGFIGLDIIASLCNMIMGLTLITLCT
WAYIRYSGEYRELGAVIDQVAALWDQGSTNEALYKLYSAAATHRHLYHQAFPTPKSESTEQSEKMKM

TRTRPLEQKLISEEDLAANDILDYKDDDDKV

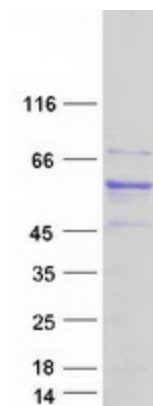
Tag:	C-Myc/DDK
Predicted MW:	63.4 kDa
Concentration:	>0.05 µg/µL as determined by microplate BCA method
Purity:	> 80% as determined by SDS-PAGE and Coomassie blue staining
Buffer:	25 mM Tris-HCl, 100 mM glycine, pH 7.3, 10% glycerol
Preparation:	Recombinant protein was captured through anti-DDK affinity column followed by conventional chromatography steps.
Note:	For testing in cell culture applications, please filter before use. Note that you may experience some loss of protein during the filtration process.
Storage:	Store at -80°C.



[View online »](#)

Stability:	Stable for 12 months from the date of receipt of the product under proper storage and handling conditions. Avoid repeated freeze-thaw cycles.
RefSeq:	NP_056999
Locus ID:	51062
UniProt ID:	Q8WXF7 , A0A0S2Z5B0 , Q53F53
RefSeq Size:	2271
Cytogenetics:	14q22.1
RefSeq ORF:	1674
Synonyms:	AD-FSP; atlastin1; FSP1; GBP3; HSN1D; SPG3; SPG3A
Summary:	The protein encoded by this gene is a GTPase and a Golgi body transmembrane protein. The encoded protein can form a homotetramer and has been shown to interact with spastin and with mitogen-activated protein kinase kinase kinase 4. This protein may be involved in axonal maintenance as evidenced by the fact that defects in this gene are a cause of spastic paraplegia type 3. Three transcript variants encoding two different isoforms have been found for this gene. [provided by RefSeq, Jul 2008]
Protein Families:	Druggable Genome, Transmembrane

Product images:



Coomassie blue staining of purified ATL1 protein (Cat# TP302310). The protein was produced from HEK293T cells transfected with ATL1 cDNA clone (Cat# [RC202310]) using MegaTran 2.0 (Cat# [TT210002]).