

## Product datasheet for **TP302307L**

### PSMD3 (NM\_002809) Human Recombinant Protein

#### Product data:

Product Type:	Recombinant Proteins
Description:	Recombinant protein of human proteasome (prosome, macropain) 26S subunit, non-ATPase, 3 (PSMD3), 1 mg
Species:	Human
Expression Host:	HEK293T
Expression cDNA	>RC202307 protein sequence
Clone or AA Sequence:	Red=Cloning site Green=Tags(s)

MKQEGSARRRGADKAKPPPGGGEQEP PPPPAPQDVEMKEEAATGGGSGTEADGKTA AAAAEHSQRELDTV  
 TLEDIKEHV KQLEKAVSGKEPRFVLRALRMLPSTSRRLNHVLYKAVQGFFTSNNATRD FLLPFLEPM D  
 TEADLQFRPRTGKAASNTLLPEVEAYLQLLVIFMMNSKRYKEAQKISDDL MQKISTQNRRALDLVAAK  
 YYYHARVYEF LDKLDVRSFLHARLRTATLRHDADGQATLLNLLL RNYLHYSLYDQAEKLVSKSVFPEQA  
 NNNEWARYLYTGR IKAIQLEYSVARRTMTNALRKAPQHTAVGFKQTVHKLLI VVELLLGEIPDRLQFRQ  
 PSLKRSLMPYFLLTQAVRTGNLAKFNQVLDQFGEKFQADGTYTLIIRLRHNVIKTGVRMISLSYSRISLA  
 DIAQKLQLDSPEDA EFIVAKAIRDGVIEASINHEKGYVQSKEMIDIYSTREPQLAFHQ RISFCLDIHNMS  
 VKAMRFPKSYNKDLES AEERREREQQDLEFAKEMAEDDDDSFP

TRTRPLEQKLISEEDLAANDILDYKDDDDKV

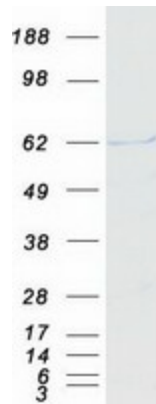
Tag:	C-Myc/DDK
Predicted MW:	60.8 kDa
Concentration:	>0.05 µg/µL as determined by microplate BCA method
Purity:	> 80% as determined by SDS-PAGE and Coomassie blue staining
Buffer:	25 mM Tris-HCl, 100 mM glycine, pH 7.3, 10% glycerol
Preparation:	Recombinant protein was captured through anti-DDK affinity column followed by conventional chromatography steps.
Note:	For testing in cell culture applications, please filter before use. Note that you may experience some loss of protein during the filtration process.
Storage:	Store at -80°C.



[View online »](#)

<b>Stability:</b>	Stable for 12 months from the date of receipt of the product under proper storage and handling conditions. Avoid repeated freeze-thaw cycles.
<b>RefSeq:</b>	<a href="#">NP_002800</a>
<b>Locus ID:</b>	5709
<b>UniProt ID:</b>	<a href="#">O43242</a>
<b>RefSeq Size:</b>	2187
<b>Cytogenetics:</b>	17q21.1
<b>RefSeq ORF:</b>	1602
<b>Synonyms:</b>	P58; RPN3; S3; TSTA2
<b>Summary:</b>	The 26S proteasome is a multicatalytic proteinase complex with a highly ordered structure composed of 2 complexes, a 20S core and a 19S regulator. The 20S core is composed of 4 rings of 28 non-identical subunits; 2 rings are composed of 7 alpha subunits and 2 rings are composed of 7 beta subunits. The 19S regulator is composed of a base, which contains 6 ATPase subunits and 2 non-ATPase subunits, and a lid, which contains up to 10 non-ATPase subunits. Proteasomes are distributed throughout eukaryotic cells at a high concentration and cleave peptides in an ATP/ubiquitin-dependent process in a non-lysosomal pathway. This gene encodes a member of the proteasome subunit S3 family that functions as one of the non-ATPase subunits of the 19S regulator lid. Single nucleotide polymorphisms in this gene are associated with neutrophil count. [provided by RefSeq, Jul 2012]
<b>Protein Pathways:</b>	Proteasome

### Product images:



Coomassie blue staining of purified PSMD3 protein (Cat# [TP302307]). The protein was produced from HEK293T cells transfected with PSMD3 cDNA clone (Cat# [RC202307]) using MegaTran 2.0 (Cat# [TT210002]).