

Product datasheet for **TP302296M**

Gemin 6 (GEMIN6) (NM_024775) Human Recombinant Protein

Product data:

Product Type:	Recombinant Proteins
Description:	Recombinant protein of human gem (nuclear organelle) associated protein 6 (GEMIN6), 100 µg
Species:	Human
Expression Host:	HEK293T
Expression cDNA Clone or AA Sequence:	>RC202296 protein sequence Red =Cloning site Green =Tags(s)
	MSEWMKKGPLEWQDYIYKEVRTASEKNEYKGWVLTDPVSANIVLVNFLEDGSM SVTGIMGHAVQTVET MNEGDHRVREKLMHLFTSGDCKAYSPEDLEERKNSLKKWLEKNHIPITEQGDAPRTL CVAGVLTIDPPYD PENCSSSNEIILSRVQDLIEGHLTASQ
	TRTRPLEQKLISEEDLAANDILDYKDDDDKV
Tag:	C-Myc/DDK
Predicted MW:	18.6 kDa
Concentration:	>0.05 µg/µL as determined by microplate BCA method
Purity:	> 80% as determined by SDS-PAGE and Coomassie blue staining
Buffer:	25 mM Tris-HCl, 100 mM glycine, pH 7.3, 10% glycerol
Preparation:	Recombinant protein was captured through anti-DDK affinity column followed by conventional chromatography steps.
Note:	For testing in cell culture applications, please filter before use. Note that you may experience some loss of protein during the filtration process.
Storage:	Store at -80°C.
Stability:	Stable for 12 months from the date of receipt of the product under proper storage and handling conditions. Avoid repeated freeze-thaw cycles.
RefSeq:	<u>NP_079051</u>
Locus ID:	79833
UniProt ID:	<u>Q8WXD5</u>
RefSeq Size:	705



[View online »](#)

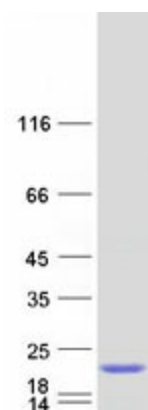
Cytogenetics: 2p22.1

RefSeq ORF: 501

Summary: GEMIN6 is part of a large macromolecular complex, localized to both the cytoplasm and the nucleus, that plays a role in the cytoplasmic assembly of small nuclear ribonucleoproteins (snRNPs). Other members of this complex include SMN (MIM 600354), GEMIN2 (SIP1; MIM 602595), GEMIN3 (DDX20; MIM 606168), GEMIN4 (MIM 606969), and GEMIN5 (MIM 607005). [supplied by OMIM, Jul 2002]

Protein Families: Druggable Genome, Stem cell - Pluripotency

Product images:



Coomassie blue staining of purified GEMIN6 protein (Cat# [TP302296]). The protein was produced from HEK293T cells transfected with GEMIN6 cDNA clone (Cat# [RC202296]) using MegaTran 2.0 (Cat# [TT210002]).