

Product datasheet for **TP302296L**

Gemin 6 (GEMIN6) (NM_024775) Human Recombinant Protein

Product data:

| | |
|---------------------------------------|--|
| Product Type: | Recombinant Proteins |
| Description: | Recombinant protein of human gem (nuclear organelle) associated protein 6 (GEMIN6), 1 mg |
| Species: | Human |
| Expression Host: | HEK293T |
| Expression cDNA Clone or AA Sequence: | >RC202296 protein sequence Red =Cloning site Green =Tags(s) |
| | MSEWMKKGPLEWQDYIYKEVRTASEKNEYKGWVLTDPVSNIVLVNFLEDGSM SVTGIMGHAVQTVET MNEGDHRVREKLMHLFTSGDCKAYSPEDLEERKNSLKKWLEKNHIPITEQGDAPRTL CVAGVLTIDPPYD PENCSSSNEIILSRVQDLIEGHLTASQ |
| | TRTRPLEQKLISEEDLAANDILDYKDDDDKV |
| Tag: | C-Myc/DDK |
| Predicted MW: | 18.6 kDa |
| Concentration: | >0.05 µg/µL as determined by microplate BCA method |
| Purity: | > 80% as determined by SDS-PAGE and Coomassie blue staining |
| Buffer: | 25 mM Tris-HCl, 100 mM glycine, pH 7.3, 10% glycerol |
| Preparation: | Recombinant protein was captured through anti-DDK affinity column followed by conventional chromatography steps. |
| Note: | For testing in cell culture applications, please filter before use. Note that you may experience some loss of protein during the filtration process. |
| Storage: | Store at -80°C. |
| Stability: | Stable for 12 months from the date of receipt of the product under proper storage and handling conditions. Avoid repeated freeze-thaw cycles. |
| RefSeq: | NP_079051 |
| Locus ID: | 79833 |
| UniProt ID: | Q8WXD5 |
| RefSeq Size: | 705 |



[View online »](#)

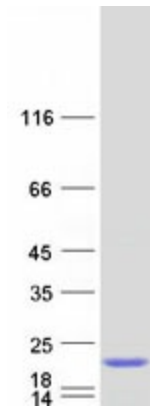
Cytogenetics: 2p22.1

RefSeq ORF: 501

Summary: GEMIN6 is part of a large macromolecular complex, localized to both the cytoplasm and the nucleus, that plays a role in the cytoplasmic assembly of small nuclear ribonucleoproteins (snRNPs). Other members of this complex include SMN (MIM 600354), GEMIN2 (SIP1; MIM 602595), GEMIN3 (DDX20; MIM 606168), GEMIN4 (MIM 606969), and GEMIN5 (MIM 607005). [supplied by OMIM, Jul 2002]

Protein Families: Druggable Genome, Stem cell - Pluripotency

Product images:



Coomassie blue staining of purified GEMIN6 protein (Cat# [TP302296]). The protein was produced from HEK293T cells transfected with GEMIN6 cDNA clone (Cat# [RC202296]) using MegaTran 2.0 (Cat# [TT210002]).