

## Product datasheet for **TP302295M**

### ROGDI (NM\_024589) Human Recombinant Protein

#### Product data:

Product Type:	Recombinant Proteins
Description:	Recombinant protein of human rogdi homolog (Drosophila) (ROGDI), 100 µg
Species:	Human
Expression Host:	HEK293T
Expression cDNA Clone or AA Sequence:	>RC202295 protein sequence <b>Red</b> =Cloning site <b>Green</b> =Tags(s)
	 MATVMAATAAERAVLEEEFRWLLHDEVHAVLKQLQDILKEASLRFTLPGSGTEGPAKQENFILGSCGTDQ VKGVLTQGDALSQADVNLKMPRNNQLLHFAFREDKQWKLQQIQDARNHVSQAIYLLTSRDQSYQFKTGA EVLKLMDAVMLQLTRARNRLTTPATLTLPEIAASGLTRMFAPALPSDLLVNVYINLNKLCITVYQLHALQ PNSTKNFRPAGGAVLHSPGAMFEWGSQRLEVSHVHKVECVIPWLNDALVYFTVSLQLCQQLKDKISVFSS YWSYRPF  <b>TRTRPLEQKLISEEDLAANDILDYKDDDDKV</b>
Tag:	C-Myc/DDK
Predicted MW:	32.1 kDa
Concentration:	>0.05 µg/µL as determined by microplate BCA method
Purity:	> 80% as determined by SDS-PAGE and Coomassie blue staining
Buffer:	25 mM Tris-HCl, 100 mM glycine, pH 7.3, 10% glycerol
Preparation:	Recombinant protein was captured through anti-DDK affinity column followed by conventional chromatography steps.
Note:	For testing in cell culture applications, please filter before use. Note that you may experience some loss of protein during the filtration process.
Storage:	Store at -80°C.
Stability:	Stable for 12 months from the date of receipt of the product under proper storage and handling conditions. Avoid repeated freeze-thaw cycles.
RefSeq:	<u><a href="#">NP_078865</a></u>
Locus ID:	79641



[View online »](#)

UniProt ID: [Q9GZN7](#)

RefSeq Size: 1776

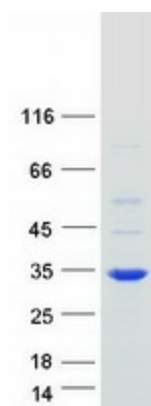
Cytogenetics: 16p13.3

RefSeq ORF: 861

Synonyms: KTZS

**Summary:** This gene encodes a protein of unknown function. Loss-of-function mutation in this gene cause Kohlschutter-Tonz syndrome. Alternate splicing results in multiple transcript variants. [provided by RefSeq, Mar 2012]

### Product images:



Coomassie blue staining of purified ROGDI protein (Cat# [TP302295]). The protein was produced from HEK293T cells transfected with ROGDI cDNA clone (Cat# [RC202295]) using MegaTran 2.0 (Cat# [TT210002]).