

Product datasheet for TP302292

PSMD6 (NM_014814) Human Recombinant Protein

Product data:

Product Type:	Recombinant Proteins
Description:	Recombinant protein of human proteasome (prosome, macropain) 26S subunit, non-ATPase, 6 (PSMD6), 20 µg
Species:	Human
Expression Host:	HEK293T
Expression cDNA Clone or AA Sequence:	>RC202292 representing NM_014814 Red =Cloning site Green =Tags(s)
	<p>MPLNLEEEGLPKNPDLRIAQLRFLLSLPEHRGDAAVRDELMAAVRDNNMAPYYEALCKSLDWQIDVDLL NKMKKANEDELKRLDEELEDKAEKNLGESEIRDAMMAKAEYLCRIGDKEGALTAFRKTYDKTVALGHRLDI VFYLLRIGLFYMDNDLITRNTEKAKSLIEEGGDWDRRNRLKVYQGLYCVAIRDFKQAAELFDTVSTFTS YELMDYKTFVYTYVYVSMIALERPDLREKVIKGAIEVLHSLPAVRQYLFSLYECRYSVFFQSLAWVEQ EMKKDWLFAPHYRYVREMRIHAYSQLLLESYRSLTGYMAEAFGVGVFIDQELSRFIAAGRLHCKIDKV NEIVETNRPDSKNWQYQETIKKGDLLLNRVQKLSRVINM</p> <p>TRTRPLEQKLISEEDLAANDILDYKDDDDKV</p>
Tag:	C-Myc/DDK
Predicted MW:	45.4 kDa
Concentration:	>0.05 µg/µL as determined by microplate BCA method
Purity:	> 80% as determined by SDS-PAGE and Coomassie blue staining
Buffer:	25 mM Tris-HCl, 100 mM glycine, pH 7.3, 10% glycerol
Preparation:	Recombinant protein was captured through anti-DDK affinity column followed by conventional chromatography steps.
Note:	For testing in cell culture applications, please filter before use. Note that you may experience some loss of protein during the filtration process.
Storage:	Store at -80°C.
Stability:	Stable for 12 months from the date of receipt of the product under proper storage and handling conditions. Avoid repeated freeze-thaw cycles.
RefSeq:	<u>NP_055629</u>



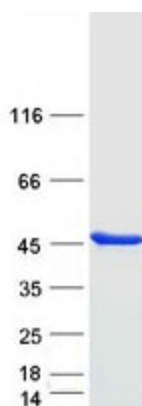
[View online »](#)

Locus ID: 9861
UniProt ID: [Q15008](#)
RefSeq Size: 1308
Cytogenetics: 3p14.1
RefSeq ORF: 1167
Synonyms: p42A; p44S10; Rpn7; S10; SGA-113M

Summary: This gene encodes a member of the protease subunit S10 family. The encoded protein is a subunit of the 26S proteasome which colocalizes with DNA damage foci and is involved in the ATP-dependent degradation of ubiquitinated proteins. Alternative splicing results in multiple transcript variants [provided by RefSeq, Nov 2012]

Protein Pathways: Proteasome

Product images:



Coomassie blue staining of purified PSMD6 protein (Cat# TP302292). The protein was produced from HEK293T cells transfected with PSMD6 cDNA clone (Cat# [RC202292]) using MegaTran 2.0 (Cat# [TT210002]).