

Product datasheet for TP302291

C16orf9 (FAM234A) (NM_032039) Human Recombinant Protein

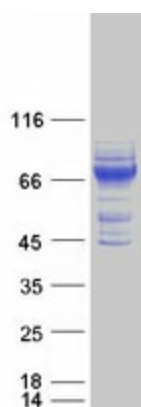
Product data:

Product Type:	Recombinant Proteins
Description:	Recombinant protein of human integrin alpha FG-GAP repeat containing 3 (ITFG3), 20 µg
Species:	Human
Expression Host:	HEK293T
Expression cDNA Clone or AA Sequence:	>RC202291 protein sequence Red =Cloning site Green =Tags(s)
	<p>MLDHKDLEAEIHPLKNEERKSQENLGNPSKNEDNVKSAPPQSRLSRCRAAAFFLSLFLCLFVVFVSVFI PCPDRPASQRMWRIDYSAAVIYDFLAVDDINGDRIQDVFLYKNTNSSNNFNRSCVDEGFSSPCTFAAAV SGANGSTLWERPVAQDVALVECAVPQPRGSEAPSACILVGRPSSFIAVNLFTGETLWNHSSSFSGNASIL SPLLQVPDVG DGAPDLLVLTQEREEVSGHLYSGSTGHQIGLRGSLGVDGESGFLLVHTRTGAHYILFPC ASSLCGCSVKGLYEKVTGSGGPFKSDPHWESMLNATRRMLSHSSGAVRYLMHVPGNAGADVLLVGSEA F VLLDGQELTPRWTPKAAHVLRKPIFGRYKPDTLAVAVENGTGTDRQILFLDLGTGAVLCSLALPSLPGGP LSASLPTADHRSAFFFWGLHELGSTSETETGEARHSLYMFHPTLPRVLELANVSTHIVAFDAVLFEPSR HAAYILLTGPADSEAPGLVSVIKHKVRDLVPSRVVRLGEGGPDSDQAIRDFRSRLRYQSEA</p> <p>TRTRPLEQKLISEEDLAANDILDYKDDDDKV</p>
Tag:	C-Myc/DDK
Predicted MW:	59.5 kDa
Concentration:	>0.05 µg/µL as determined by microplate BCA method
Purity:	> 80% as determined by SDS-PAGE and Coomassie blue staining
Buffer:	25 mM Tris-HCl, 100 mM glycine, pH 7.3, 10% glycerol
Preparation:	Recombinant protein was captured through anti-DDK affinity column followed by conventional chromatography steps.
Note:	For testing in cell culture applications, please filter before use. Note that you may experience some loss of protein during the filtration process.
Storage:	Store at -80°C.



[View online »](#)

Stability:	Stable for 12 months from the date of receipt of the product under proper storage and handling conditions. Avoid repeated freeze-thaw cycles.
RefSeq:	NP_114428
Locus ID:	83986
UniProt ID:	Q9H0X4
RefSeq Size:	3224
Cytogenetics:	16p13.3
RefSeq ORF:	1656
Synonyms:	C16orf9; gs19; ITFG3
Protein Families:	Transmembrane

Product images:

Coomassie blue staining of purified FAM234A protein (Cat# TP302291). The protein was produced from HEK293T cells transfected with FAM234A cDNA clone (Cat# [RC202291]) using MegaTran 2.0 (Cat# [TT210002]).