

Product datasheet for **TP302288L**

TMEM80 (NM_174940) Human Recombinant Protein

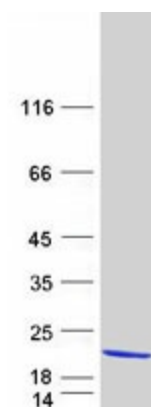
Product data:

| | |
|---------------------------------------|---|
| Product Type: | Recombinant Proteins |
| Description: | Recombinant protein of human transmembrane protein 80 (TMEM80), transcript variant 1, 1 mg |
| Species: | Human |
| Expression Host: | HEK293T |
| Expression cDNA Clone or AA Sequence: | >RC202288 protein sequence Red =Cloning site Green =Tags(s) |
| | MAEGARARGPRGCRDRDGPAGGAGRGSSSTVLSSVPLQMLFYLSGTYALYFLATLLMITYKSQVFSYPHR YLVLDLALLFLMGILEAVRLYLGTRGNLTEAERPLAASLALTAGTALLSAHFLWQALVLWADWALSATL LALHGLEAVLQVVAIAAFTR TRTRPLEQKLISEEDLAANDILDYKDDDDKV |
| Tag: | C-Myc/DDK |
| Predicted MW: | 17.1 kDa |
| Concentration: | >0.05 µg/µL as determined by microplate BCA method |
| Purity: | > 80% as determined by SDS-PAGE and Coomassie blue staining |
| Buffer: | 25 mM Tris-HCl, 100 mM glycine, pH 7.3, 10% glycerol |
| Preparation: | Recombinant protein was captured through anti-DDK affinity column followed by conventional chromatography steps. |
| Note: | For testing in cell culture applications, please filter before use. Note that you may experience some loss of protein during the filtration process. |
| Storage: | Store at -80°C. |
| Stability: | Stable for 12 months from the date of receipt of the product under proper storage and handling conditions. Avoid repeated freeze-thaw cycles. |
| RefSeq: | NP_777600 |
| Locus ID: | 283232 |
| UniProt ID: | Q96HE8 |



[View online »](#)

RefSeq Size: 1638
Cytogenetics: 11p15.5
RefSeq ORF: 480
Protein Families: Transmembrane

Product images:

Coomassie blue staining of purified TMEM80 protein (Cat# [TP302288]). The protein was produced from HEK293T cells transfected with TMEM80 cDNA clone (Cat# [RC202288]) using MegaTran 2.0 (Cat# [TT210002]).