

Product datasheet for TP302286

SLC41A3 (NM_001008485) Human Recombinant Protein

Product data:

Product Type: Recombinant Proteins

Description: Recombinant protein of human solute carrier family 41, member 3 (SLC41A3), transcript variant 1, 20 µg

Species: Human

Expression Host: HEK293T

Expression cDNA Clone or AA Sequence: >RC202286 protein sequence
Red=Cloning site **Green**=Tags(s)

MDGTETRQRRDSCGKPGELGLPHPLSTGGLPVASEDGALRAPESQSVTPKPLETEPSRETAWSIGLQVT
VPFMFAGLGLSWAGMLLDYFQHPVPFVEVKDLLTLVPLVGLKGNLEMTLASRLSTAANTGQIDDPQEQH
RVISSNLALIQQVQATVVGLLAAVAALLGVVSREEVDVAKVELLCASSVLTAFLLAALGVLMLVCIVIGA
RKLGVNPDNIATPIAASLGLDLITLSILALVSSFFYRHKDSRYLTPLVCLSFALTPVWVLIQKSPPIVK
ILKFGWFPILAMVISSFGGLILSKTVSKQYKGMIAIFTPVICGVGGNLVAIQTSRISTYLHMWSAPGVL
PLQMKKFWPNPCSTFCTSEINSMSARVLLLLVPGHLIFFYIYLVVEGQSVINSQTFVWVLYLLAGLIQVT
ILLYLAEVMVRLTWHQALDPDNHCIPYLTGLGDLGSSSVGHTAAVPRRCTASPGWGLIQPFICTQHLIV
SLLSFYFPFCLLAKTSI

TRTRPLEQKLISEEDLAANDILDYKDDDDKV

Tag: C-Myc/DDK

Predicted MW: 54.6 kDa

Concentration: >0.05 µg/µL as determined by microplate BCA method

Purity: > 80% as determined by SDS-PAGE and Coomassie blue staining

Buffer: 25 mM Tris-HCl, 100 mM glycine, pH 7.3, 10% glycerol

Preparation: Recombinant protein was captured through anti-DDK affinity column followed by conventional chromatography steps.

Note: For testing in cell culture applications, please filter before use. Note that you may experience some loss of protein during the filtration process.

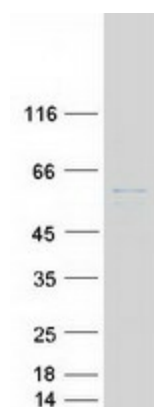
Storage: Store at -80°C.



[View online »](#)

Stability:	Stable for 12 months from the date of receipt of the product under proper storage and handling conditions. Avoid repeated freeze-thaw cycles.
RefSeq:	NP_001008485
Locus ID:	54946
UniProt ID:	Q96GZ6
RefSeq Size:	1805
Cytogenetics:	3q21.2-q21.3
RefSeq ORF:	1521
Synonyms:	SLC41A1-L2
Protein Families:	Transmembrane

Product images:



Coomassie blue staining of purified SLC41A3 protein (Cat# TP302286). The protein was produced from HEK293T cells transfected with SLC41A3 cDNA clone (Cat# [RC202286]) using MegaTran 2.0 (Cat# [TT210002]).