

## Product datasheet for TP302274M

### LEO1 (NM\_138792) Human Recombinant Protein

#### Product data:

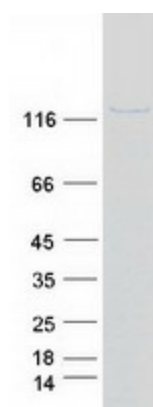
<b>Product Type:</b>	Recombinant Proteins
<b>Description:</b>	Recombinant protein of human Leo1, Paf1/RNA polymerase II complex component, homolog (S. cerevisiae) (LEO1), 100 µg
<b>Species:</b>	Human
<b>Expression Host:</b>	HEK293T
<b>Expression cDNA Clone or AA Sequence:</b>	>RC202274 protein sequence <b>Red</b> =Cloning site <b>Green</b> =Tags(s)
	MADMEDLFGSDADSEAERKDSDSGSDSDSDQENAASGSNASGSESDQDERGDSGQPSNKELFGDDSEDEG ASHHSGSDNHSERSDNRSEASERSDHEDNDPSDVDQHGSEAPNDDEDEGHRSDGGSHHSEAEGSEKAHS DDEKWGREDKSDQSDDEKIQNSDDEERAQGSDEDKLQNSDDDEKMQNTDDEERPQLSDDERQQLSEEEKA NSDDERPVASDNDDEKQNSDDEEQPQLSDEEKMQNSDDERPQASDEEHRHSDDEEEQDHKSESARGSDSE DEVLRMKRKNAIASDSEADSDTEVPKDNSGTMDLFGGADDISSGSDGEDKPPTPGQPVDENGLPQDQEE EPIPETRIEVEIPKVNTDLGNDLYFVKLPNFLSVEPRPFDPPQYYEDEFEDEEMLDEEGRTRLKLVKVENTI RWRIRRDEEGNEIKESNARIVKWSDGMSLHLGNEVFDVYKAPLQGDHNLHFIHQGTGLQGQAVFKTKLT FRPHSTDSATHRKMTLSLADRCSKTQKIRILPMAGRDPECQRTEMIKKEEERLRASIRRESQRRMREKQ HQRGLSASYLEPDRYDEEEEGEESISLAAIKNRYKGGIREERARIYSSSDSDEGSEEDKAQRLLKAKKLT DEEGEPSGKRKAEDDDKANKKHKKYVISDEEEEDDD  <b>TRTRPLEQKLISEEDLAANDILDYKDDDDKV</b>
<b>Tag:</b>	C-Myc/DDK
<b>Predicted MW:</b>	75.2 kDa
<b>Concentration:</b>	>0.05 µg/µL as determined by microplate BCA method
<b>Purity:</b>	> 80% as determined by SDS-PAGE and Coomassie blue staining
<b>Buffer:</b>	25 mM Tris-HCl, 100 mM glycine, pH 7.3, 10% glycerol
<b>Preparation:</b>	Recombinant protein was captured through anti-DDK affinity column followed by conventional chromatography steps.
<b>Note:</b>	For testing in cell culture applications, please filter before use. Note that you may experience some loss of protein during the filtration process.
<b>Storage:</b>	Store at -80°C.



[View online »](#)

<b>Stability:</b>	Stable for 12 months from the date of receipt of the product under proper storage and handling conditions. Avoid repeated freeze-thaw cycles.
<b>RefSeq:</b>	<a href="#">NP_620147</a>
<b>Locus ID:</b>	123169
<b>UniProt ID:</b>	<a href="#">Q8WVC0</a>
<b>RefSeq Size:</b>	2202
<b>Cytogenetics:</b>	15q21.2
<b>RefSeq ORF:</b>	1998
<b>Synonyms:</b>	RDL
<b>Summary:</b>	LEO1, parafibromin (CDC73; MIM 607393), CTR9 (MIM 609366), and PAF1 (MIM 610506) form the PAF protein complex that associates with the RNA polymerase II subunit POLR2A (MIM 180660) and with a histone methyltransferase complex (Rozenblatt-Rosen et al., 2005 [PubMed 15632063]).[supplied by OMIM, Mar 2008]

### Product images:



Coomassie blue staining of purified LEO1 protein (Cat# [TP302274]). The protein was produced from HEK293T cells transfected with LEO1 cDNA clone (Cat# [RC202274]) using MegaTran 2.0 (Cat# [TT210002]).