

Product datasheet for TP302274

LEO1 (NM_138792) Human Recombinant Protein

Product data:

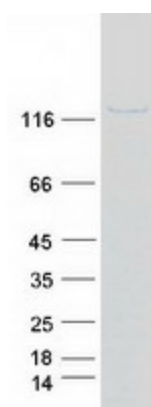
Product Type:	Recombinant Proteins
Description:	Recombinant protein of human Leo1, Paf1/RNA polymerase II complex component, homolog (S. cerevisiae) (LEO1), 20 µg
Species:	Human
Expression Host:	HEK293T
Expression cDNA Clone or AA Sequence:	>RC202274 protein sequence Red =Cloning site Green =Tags(s)
	MADMEDLFGSDADSEAERKDSDSGSDSDSDQENAASGSNASGSESDQDERGDSGQPSNKELFGDDSEDEG ASHHSGSDNHSERSDNRSEASERSDHEDNDPSDVDQHGSGSEAPNDDEDEGHRSDGGSHHSEAEGSEKAHS DDEKWGREDKSDQSDDEKIQNSDDEERAQGSDEDKLQNSDDDEKMQNTDDEERPQLSDDERQQLSEEEKA NSDDERPVASDNDDEKQNSDDEEQPQLSDEEKMQNSDDDERPQASDEEHRHSDDEEEQDHKSESARGSDSE DEVLRMKRKNAIASDSEADSDTEVPKDNSGTMDLFGGADDISSGSDGEDKPPTPGQPVDENGLPQDQEE EPIPETRIEVEIPKVNTDLGNDLYFVKLPNFLSVEPRFPDPQYYEDEFEDEEMLDEEGRTRLKLVKVENTI RWRIRRDEEGNEIKESNARIVKWSGMSLHLGNEVFDVYKAPLQGDHNLHFIHQGTGLQGQAVFKTKLT FRPHSTDSATHRKMTLSLADRCSKTQKIRILPMAGRDPECQRTEMIKKEEERLRASIRRESQRRMREKQ HQRGLSASYLEPDRYDEEEEGEESISLAAIKNRYKGGIREERARIYSSSDSDEGSEEDKAQRLLKAKKLT DEEGEPSGKRKAEDDDKANKKHKKYVISDEEEEDDD TRTRPLEQKLISEEDLAANDILDYKDDDDKV
Tag:	C-Myc/DDK
Predicted MW:	75.2 kDa
Concentration:	>0.05 µg/µL as determined by microplate BCA method
Purity:	> 80% as determined by SDS-PAGE and Coomassie blue staining
Buffer:	25 mM Tris-HCl, 100 mM glycine, pH 7.3, 10% glycerol
Preparation:	Recombinant protein was captured through anti-DDK affinity column followed by conventional chromatography steps.
Note:	For testing in cell culture applications, please filter before use. Note that you may experience some loss of protein during the filtration process.
Storage:	Store at -80°C.



[View online »](#)

Stability:	Stable for 12 months from the date of receipt of the product under proper storage and handling conditions. Avoid repeated freeze-thaw cycles.
RefSeq:	NP_620147
Locus ID:	123169
UniProt ID:	Q8WVC0
RefSeq Size:	2202
Cytogenetics:	15q21.2
RefSeq ORF:	1998
Synonyms:	RDL
Summary:	LEO1, parafibromin (CDC73; MIM 607393), CTR9 (MIM 609366), and PAF1 (MIM 610506) form the PAF protein complex that associates with the RNA polymerase II subunit POLR2A (MIM 180660) and with a histone methyltransferase complex (Rozenblatt-Rosen et al., 2005 [PubMed 15632063]).[supplied by OMIM, Mar 2008]

Product images:



Coomassie blue staining of purified LEO1 protein (Cat# TP302274). The protein was produced from HEK293T cells transfected with LEO1 cDNA clone (Cat# [RC202274]) using MegaTran 2.0 (Cat# [TT210002]).