

Product datasheet for TP302272L

GHDC (NM_032484) Human Recombinant Protein

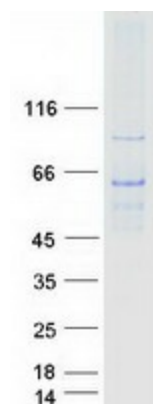
Product data:

Product Type:	Recombinant Proteins
Description:	Recombinant protein of human GH3 domain containing (GHDC), transcript variant 1, 1 mg
Species:	Human
Expression Host:	HEK293T
Expression cDNA Clone or AA Sequence:	>RC202272 protein sequence Red =Cloning site Green =Tags(s) MLLWPLLLLLLLLPTLALLRQQRSDARLSWLAGLQHRVAWGALVWAATWQRRRLEQSTLHVHQSQQ QAL RWCLQGAQRPHCSLRRSTDISTFRNHLPLTKASQTQQEDSGEQPLPPTSNDLGEASLQATLLGLAALNK AYPEVLAQGRTARVTLTSPWPRPLWPGNTLGQVGTPGTDPRALLLDALRSPGLRALEAGTAVELLDVF LGLETDGEELAGIAAGNPGAPLRERAAELREALEQGPRGLALRLWPKLQVVVTLTDAGGQAEAVAALGAL WCQGLAFFSPAYAASGGVLGLNLQPEQPHGLYLLPPGAPFIELLPVKEGTQEEAASLLLAQAQQGKEYE LVLTDRASTRCLGDVVRVVGAYNQCPVVRFCRLDQTLVSRGEDIGEDLFSEALGRAVGQWAGAKLLD HGCVESSILDSSAGSAPHYEVFVALRGLRNLSEENRDKLDHCLQEASPRYKSLRFWGSVGPVRLVVGQG AFRALRAALAAACPSPPFPAMPVRLRHRHLAQCLQERVVS TR TRPLEQKLISEEDLAANDILDYKDDDDKV
Tag:	C-Myc/DDK
Predicted MW:	57.3 kDa
Concentration:	>0.05 µg/µL as determined by microplate BCA method
Purity:	> 80% as determined by SDS-PAGE and Coomassie blue staining
Buffer:	25 mM Tris-HCl, 100 mM glycine, pH 7.3, 10% glycerol
Preparation:	Recombinant protein was captured through anti-DDK affinity column followed by conventional chromatography steps.
Note:	For testing in cell culture applications, please filter before use. Note that you may experience some loss of protein during the filtration process.
Storage:	Store at -80°C.


[View online »](#)

Stability:	Stable for 12 months from the date of receipt of the product under proper storage and handling conditions. Avoid repeated freeze-thaw cycles.
RefSeq:	<u>NP_115873</u>
Locus ID:	84514
UniProt ID:	<u>Q8N2G8</u>
RefSeq Size:	2496
Cytogenetics:	17q21.2
RefSeq ORF:	1590
Synonyms:	D11LGP1; LGP1

Product images:



Coomassie blue staining of purified GHDC protein (Cat# [TP302272]). The protein was produced from HEK293T cells transfected with GHDC cDNA clone (Cat# [RC202272]) using MegaTran 2.0 (Cat# [TT210002]).