

Product datasheet for **TP302269M**

ACP6 (NM_016361) Human Recombinant Protein

Product data:

Product Type:	Recombinant Proteins
Description:	Recombinant protein of human acid phosphatase 6, lysophosphatidic (ACP6), 100 µg
Species:	Human
Expression Host:	HEK293T
Expression cDNA	>RC202269 protein sequence
Clone or AA Sequence:	Red=Cloning site Green=Tags(s)

MITGVFSMRLWTPVGVLTSLAYCLHQRRVALAELQEADGQCPVDRSLLKLMVQVFRHGARSPLKPLPL
EEQVEWNPQLLEVPPQTQFDYTVTNLAGGPKPYSPYDSQYHETTLKGGMFAGQLTKVGMQMFALGERLR
KNYVEDIPFLSPTFNPQEVFIRSTNIFRNLESTRCLLAGLFQCQKEGPIIIHTDEADSEVLPNYQSCWS
LRQRTRGRRQTASLQPGISEDLKKVKDRMGIDSSDKVDFILLDNVAAEQAHNLPSCPMLKRFARMIEQR
AVDTSLYILPKEDRESLQMAVGPFLHILESNLLKAMDSATAPDKIRKLYLYAAHDVTFIPLLMTLGIFDH
KWPPFAVDLTMELYQHLESKEWFVQLYHKGKEQVPRGCPDGLCPLDMFLNAMS VYTLSP EKYHALCSQTQ
VMEVGNEE

TRTRPLEQKLISEEDLAANDILDYKDDDDKV

Tag:	C-Myc/DDK
Predicted MW:	48.7 kDa
Concentration:	>0.05 µg/µL as determined by microplate BCA method
Purity:	> 80% as determined by SDS-PAGE and Coomassie blue staining
Buffer:	25 mM Tris-HCl, 100 mM glycine, pH 7.3, 10% glycerol
Preparation:	Recombinant protein was captured through anti-DDK affinity column followed by conventional chromatography steps.
Note:	For testing in cell culture applications, please filter before use. Note that you may experience some loss of protein during the filtration process.
Storage:	Store at -80°C.
Stability:	Stable for 12 months from the date of receipt of the product under proper storage and handling conditions. Avoid repeated freeze-thaw cycles.
RefSeq:	NP_057445



[View online »](#)

Locus ID: 51205

UniProt ID: [Q9NPH0](#)

RefSeq Size: 1832

Cytogenetics: 1q21.2

RefSeq ORF: 1284

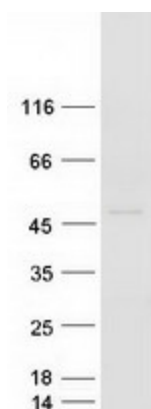
Synonyms: ACPL1; LPAP; PACPL1

Summary: This gene encodes a member of the histidine acid phosphatase protein family. The encoded protein hydrolyzes lysophosphatidic acid, which is involved in G protein-coupled receptor signaling, lipid raft modulation, and in balancing lipid composition within the cell. Alternative splicing results in multiple transcript variants. [provided by RefSeq, May 2016]

Protein Families: Druggable Genome, Secreted Protein

Protein Pathways: Riboflavin metabolism

Product images:



Coomassie blue staining of purified ACP6 protein (Cat# [TP302269]). The protein was produced from HEK293T cells transfected with ACP6 cDNA clone (Cat# [RC202269]) using MegaTran 2.0 (Cat# [TT210002]).