

Product datasheet for **TP302268L**

TIMM13 (NM_012458) Human Recombinant Protein

Product data:

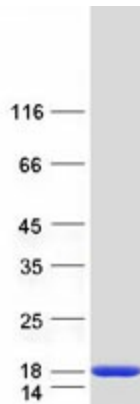
Product Type:	Recombinant Proteins
Description:	Recombinant protein of human translocase of inner mitochondrial membrane 13 homolog (yeast) (TIMM13), nuclear gene encoding mitochondrial protein, 1 mg
Species:	Human
Expression Host:	HEK293T
Expression cDNA Clone or AA Sequence:	>RC202268 protein sequence Red=Cloning site Green=Tags(s)
	MEGGFGSDFGGSGSGKLDPLIMEQVKVQIAVANAQELLQRMTDKCFRKCIGKPGGSLDNSEQKCIAMCM DRYMDAWNTVSRAYNSRLQRERANM
	TRTRPLEQKLISEEDLAANDILDYKDDDDKV
Tag:	C-Myc/DDK
Predicted MW:	10.3 kDa
Concentration:	>0.05 µg/µL as determined by microplate BCA method
Purity:	> 80% as determined by SDS-PAGE and Coomassie blue staining
Buffer:	25 mM Tris-HCl, 100 mM glycine, pH 7.3, 10% glycerol
Preparation:	Recombinant protein was captured through anti-DDK affinity column followed by conventional chromatography steps.
Note:	For testing in cell culture applications, please filter before use. Note that you may experience some loss of protein during the filtration process.
Storage:	Store at -80°C.
Stability:	Stable for 12 months from the date of receipt of the product under proper storage and handling conditions. Avoid repeated freeze-thaw cycles.
RefSeq:	NP_036590
Locus ID:	26517
UniProt ID:	Q9Y5L4
RefSeq Size:	2000



[View online »](#)

Cytogenetics:	19p13.3
RefSeq ORF:	285
Synonyms:	ppv1; TIM13; TIM13B; TIMM13A; TIMM13B
Summary:	This gene encodes a member of the evolutionarily conserved TIMM (translocase of inner mitochondrial membrane) family of proteins that function as chaperones in the import of proteins from the cytoplasm into the mitochondrial inner membrane. Proteins of this family play a role in collecting substrate proteins from the translocase of the outer mitochondrial membrane (TOM) complex and delivering them to either the sorting and assembly machinery in the outer mitochondrial membrane (SAM) complex or the TIMM22 complex in the inner mitochondrial membrane. The encoded protein and the translocase of mitochondrial inner membrane 8a protein form a 70 kDa complex in the intermembrane space. [provided by RefSeq, Jul 2013]

Product images:



Coomassie blue staining of purified TIMM13 protein (Cat# [TP302268]). The protein was produced from HEK293T cells transfected with TIMM13 cDNA clone (Cat# [RC202268]) using MegaTran 2.0 (Cat# [TT210002]).