

Product datasheet for **TP302266M**

GNL1 (NM_005275) Human Recombinant Protein

Product data:

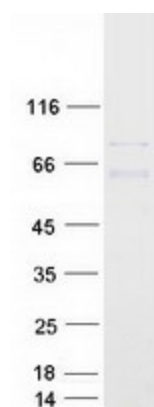
Product Type:	Recombinant Proteins
Description:	Recombinant protein of human guanine nucleotide binding protein-like 1 (GNL1), 100 µg
Species:	Human
Expression Host:	HEK293T
Expression cDNA Clone or AA Sequence:	>RC202266 protein sequence Red =Cloning site Green =Tags(s)
	<p>MPRKKPF SVKQKKKQLQDKRERKRLQDGLRSSNSRSGSRERREEQTDTSDGESVTHHIRRLNQPSQ G LGPRGYDPNRYRLHFERDSREEVERRKRAAREQVLQPVSAELLELDIREVYQPGSVLDFPRRPPWSYEMS KEQLMSQEERSFQDYLGIHGAYSSEKLSYFEHNLETWRQLWRVLEMSDIVLLITDIRHPVNFPPALYE YVTGELGLALVLVNLKVDLAPPALVWAWKHYPHYPQLHVVLFSTFPRDPRTQPDPSSVLKKSRRRGRG WTRALGPEQLLRACEAITVGKVDLSSWREKIARDVAGATWGNGSGEEEEEDGPAVLVEQQTDSAMEPTG PTQERYKDGWVTIGCVGFPNVGKSSLINGLVGRKVVSVSRTPGHTRYFQTYFLTPSVKLCDCPGLIFPSL LPRQLQVLAGIYPIAQIQEPYTAVGYLASRIPVQALLHLRHPEAEDPSAHPWCAWDICEAWAEKRGYKT AKAARNDEVYRAANSLRLAVDGRSLSCFHPPGYSEQKGTWESH PETTELVLVQGRVGPAGDEEEEEEEEL SSSCEEEEDRDADEEGEGDEETPTSAPGSSLAGRNPYALLGEDEC</p> <p>TRTRPLEQKLISEEDLAANDILDYKDDDDKV</p>
Tag:	C-Myc/DDK
Predicted MW:	68.5 kDa
Concentration:	>0.05 µg/µL as determined by microplate BCA method
Purity:	> 80% as determined by SDS-PAGE and Coomassie blue staining
Buffer:	25 mM Tris-HCl, 100 mM glycine, pH 7.3, 10% glycerol
Preparation:	Recombinant protein was captured through anti-DDK affinity column followed by conventional chromatography steps.
Note:	For testing in cell culture applications, please filter before use. Note that you may experience some loss of protein during the filtration process.
Storage:	Store at -80°C.



[View online »](#)

Stability:	Stable for 12 months from the date of receipt of the product under proper storage and handling conditions. Avoid repeated freeze-thaw cycles.
RefSeq:	<u>NP_005266</u>
Locus ID:	2794
UniProt ID:	<u>P36915</u>
RefSeq Size:	7925
Cytogenetics:	6p21.33
RefSeq ORF:	1821
Synonyms:	HSR1
Summary:	The GNL1 gene, identified in the human major histocompatibility complex class I region, shows a high degree of similarity with its mouse counterpart. The GNL1 gene is located less than 2 kb centromeric to HLA-E, in the same transcriptional orientation. GNL1 is telomeric to HLA-B and HLA-C. [provided by RefSeq, Jul 2008]

Product images:



Coomassie blue staining of purified GNL1 protein (Cat# [TP302266]). The protein was produced from HEK293T cells transfected with GNL1 cDNA clone (Cat# [RC202266]) using MegaTran 2.0 (Cat# [TT210002]).