

## Product datasheet for **TP302265**

### GGH (NM\_003878) Human Recombinant Protein

#### Product data:

**Product Type:** Recombinant Proteins

**Description:** Recombinant protein of human gamma-glutamyl hydrolase (conjugase, foylpolgamma glutamyl hydrolase) (GGH), 20 µg

**Species:** Human

**Expression Host:** HEK293T

**Expression cDNA Clone or AA Sequence:** >RC202265 protein sequence  
**Red**=Cloning site **Green**=Tags(s)

MASPGCLLCVLGLLLGAASLELSRPHGDTAKKPIIGILMQKCRNKVMKKNYGRYYIAASVVKYLESAGAR  
VVPVRLDLTEKDYEILFKSINGILFPGGSVDLRRSDYAKVAKIFYNLSIQSFDDGDYFPVWGTCLGFEEL  
SLLISGECLLTATDVTVDVAMPLNFTGGQLHSRMFQNFPTTELLSLAVEPLTANFHKWLSLVKNFTMNEKL  
KKFFNVLTNTDVGKIEFISTMEGYKYPVYGVQWHPKAPYEWKNLDGISHAPNAVKTAFYLAEFFVNEAR  
KNNHHFKSESEEEKALIYQFSPYYTGNISFQQCYIFD

**TRTRPLEQKLISEEDLAANDILDYKDDDDKV**

**Tag:** C-Myc/DDK

**Predicted MW:** 33.6 kDa

**Concentration:** >0.05 µg/µL as determined by microplate BCA method

**Purity:** > 80% as determined by SDS-PAGE and Coomassie blue staining

**Buffer:** 25 mM Tris-HCl, 100 mM glycine, pH 7.3, 10% glycerol

**Preparation:** Recombinant protein was captured through anti-DDK affinity column followed by conventional chromatography steps.

**Note:** For testing in cell culture applications, please filter before use. Note that you may experience some loss of protein during the filtration process.

**Storage:** Store at -80°C.

**Stability:** Stable for 12 months from the date of receipt of the product under proper storage and handling conditions. Avoid repeated freeze-thaw cycles.

**RefSeq:** [NP\\_003869](#)

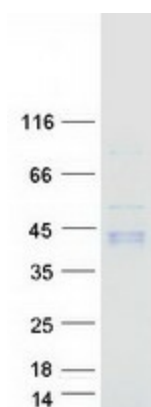
**Locus ID:** 8836



[View online »](#)

UniProt ID:	<a href="#">Q92820</a>
RefSeq Size:	1505
Cytogenetics:	8q12.3
RefSeq ORF:	954
Synonyms:	GATD10; GH
Summary:	This gene catalyzes the hydrolysis of folylpoly-gamma-glutamates and antifolylpoly-gamma-glutamates by the removal of gamma-linked polyglutamates and glutamate. [provided by RefSeq, Jul 2008]
Protein Families:	Druggable Genome, Protease, Secreted Protein
Protein Pathways:	Folate biosynthesis

### Product images:



Coomassie blue staining of purified GGH protein (Cat# TP302265). The protein was produced from HEK293T cells transfected with GGH cDNA clone (Cat# [RC202265]) using MegaTran 2.0 (Cat# [TT210002]).