

Product datasheet for TP302247

Hemoglobin subunit epsilon (HBE1) (NM_005330) Human Recombinant Protein

Product data:

| | |
|---------------------------------------|------------------------------------------------------------------------------------------------------------------------------------------------------------------------------------------------------------|
| Product Type: | Recombinant Proteins |
| Description: | Recombinant protein of human hemoglobin, epsilon 1 (HBE1), 20 µg |
| Species: | Human |
| Expression Host: | HEK293T |
| Expression cDNA Clone or AA Sequence: | >RC202247 protein sequence Red =Cloning site Green =Tags(s) |
| | MVHFTAEEKAAVTSLWSKMNVEEAGGEALGRLLWYPWTQRFFDSFGNLSSPSAILGNPKVKAHGKKVLT SFGDAIKNMDNLKPAFAKLSLHCDKLHVDPENFKLLGNVMVILATHFGKEFTPEVQAAWQKLVSAVAI ALAHKYH TRTRPLEQKLISEEDLAANDILDYKDDDDKV |
| Tag: | C-Myc/DDK |
| Predicted MW: | 16 kDa |
| Concentration: | >0.05 µg/µL as determined by microplate BCA method |
| Purity: | > 80% as determined by SDS-PAGE and Coomassie blue staining |
| Buffer: | 25 mM Tris-HCl, 100 mM glycine, pH 7.3, 10% glycerol |
| Preparation: | Recombinant protein was captured through anti-DDK affinity column followed by conventional chromatography steps. |
| Note: | For testing in cell culture applications, please filter before use. Note that you may experience some loss of protein during the filtration process. |
| Storage: | Store at -80°C. |
| Stability: | Stable for 12 months from the date of receipt of the product under proper storage and handling conditions. Avoid repeated freeze-thaw cycles. |
| RefSeq: | NP_005321 |
| Locus ID: | 3046 |
| UniProt ID: | P02100 , D9YZU7 |
| RefSeq Size: | 816 |



[View online »](#)

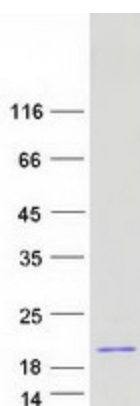
Cytogenetics: 11p15.4

RefSeq ORF: 441

Synonyms: HBE

Summary: The epsilon globin gene (HBE) is normally expressed in the embryonic yolk sac: two epsilon chains together with two zeta chains (an alpha-like globin) constitute the embryonic hemoglobin Hb Gower I; two epsilon chains together with two alpha chains form the embryonic Hb Gower II. Both of these embryonic hemoglobins are normally supplanted by fetal, and later, adult hemoglobin. The five beta-like globin genes are found within a 45 kb cluster on chromosome 11 in the following order: 5'-epsilon - G-gamma - A-gamma - delta - beta-3' [provided by RefSeq, Jul 2008]

Product images:



Coomassie blue staining of purified HBE1 protein (Cat# TP302247). The protein was produced from HEK293T cells transfected with HBE1 cDNA clone (Cat# [RC202247]) using MegaTran 2.0 (Cat# [TT210002]).