

## Product datasheet for **TP302231M**

### SEMA4A (NM\_022367) Human Recombinant Protein

#### Product data:

Product Type:	Recombinant Proteins
Description:	Recombinant protein of human sema domain, immunoglobulin domain (Ig), transmembrane domain (TM) and short cytoplasmic domain, (semaphorin) 4A (SEMA4A), 100 µg
Species:	Human
Expression Host:	HEK293T
Expression cDNA	>RC202231 protein sequence
Clone or AA Sequence:	Red=Cloning site Green=Tags(s)

MALPALGLDPWSLLGLFLFQLLQLLLPTTTAGGGGQGPMPRVRYAGDERRALSFHQQKGLQDFDTLLLS  
GDGNTLYVGAREAILALDIQDPGVPRLKNMIPWPASDRKKSECAFKKKSNETQCFNFIRVLVSYNVTHLY  
TCGTFAFSPACTFIELQDSYLLPISEDKVMEGKGQSPFDPAHKHTAVLVDGMLYSGTMNNFLGSEPILMR  
TLGSQLVLTNDNFRWLHHDASFVAAIPSTQVVYFFFEETASEFDFFERLHTSRVARVCKNDVGGKLLQ  
KKWTTFLKAQLLCTQPGQLPFNVIRHAVLLPADSPTAPHIYAVFTSQWQVGGTRSSAVCAFSLLDIERV  
KGKYKELNKETSRWTTYRGPETNPRPGSCSVGPSSDKALTFMKDHFMDQVVGTPLLVKSGVEYTRLAV  
ETAQGLDGHSHLVMYLGTTTGLSHKAVVSGDSSAHLVEEIQLPDPEPVRNLQLAPTQGAVFVGGVW  
RVPRANCSVYESCVCVLARDPHCAWDPESTRCCLLSAPNLNSWKQDMERGNPEWACASGPMRSRLRPQS  
RPQIIKEVLAVPNSILELPCPHLSALASYWSHGPAAVPEASSTVYNGSLLLIVQDGVGGGLYQCWATENG  
FSYPVISYWVDSQDQTLALDPELAGIPREHVKVPLTRVSGGAALAAQQSYWPHFVTVTVLFALVLSGALI  
ILVASPLRALRARGKVQGCETLRPGEKAPLSREQHLQSPKECRTSASDVDADNNCLGTEVA

TRTRPLEQKLISEEDLAANDILDYKDDDDKV

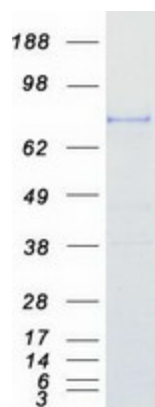
Tag:	C-Myc/DDK
Predicted MW:	83.4 kDa
Concentration:	>0.05 µg/µL as determined by microplate BCA method
Purity:	> 80% as determined by SDS-PAGE and Coomassie blue staining
Buffer:	25 mM Tris-HCl, 100 mM glycine, pH 7.3, 10% glycerol
Preparation:	Recombinant protein was captured through anti-DDK affinity column followed by conventional chromatography steps.
Note:	For testing in cell culture applications, please filter before use. Note that you may experience some loss of protein during the filtration process.



[View online »](#)

<b>Storage:</b>	Store at -80°C.
<b>Stability:</b>	Stable for 12 months from the date of receipt of the product under proper storage and handling conditions. Avoid repeated freeze-thaw cycles.
<b>RefSeq:</b>	<a href="#">NP_071762</a>
<b>Locus ID:</b>	64218
<b>UniProt ID:</b>	<a href="#">Q9H3S1</a>
<b>RefSeq Size:</b>	3313
<b>Cytogenetics:</b>	1q22
<b>RefSeq ORF:</b>	2283
<b>Synonyms:</b>	CORD10; RP35; SEMAB; SEMB
<b>Summary:</b>	This gene encodes a member of the semaphorin family of soluble and transmembrane proteins. Semaphorins are involved in numerous functions, including axon guidance, morphogenesis, carcinogenesis, and immunomodulation. The encoded protein is a single-pass type I membrane protein containing an immunoglobulin-like C2-type domain, a PSI domain and a sema domain. It inhibits axonal extension by providing local signals to specify territories inaccessible for growing axons. It is an activator of T-cell-mediated immunity and suppresses vascular endothelial growth factor (VEGF)-mediated endothelial cell migration and proliferation in vitro and angiogenesis in vivo. Mutations in this gene are associated with retinal degenerative diseases including retinitis pigmentosa type 35 (RP35) and cone-rod dystrophy type 10 (CORD10). Multiple alternatively spliced transcript variants encoding different isoforms have been identified.[provided by RefSeq, Sep 2010]
<b>Protein Families:</b>	Transmembrane
<b>Protein Pathways:</b>	Axon guidance

### Product images:



Coomassie blue staining of purified SEMA4A protein (Cat# [TP302231]). The protein was produced from HEK293T cells transfected with SEMA4A cDNA clone (Cat# [RC202231]) using MegaTran 2.0 (Cat# [TT210002]).