

Product datasheet for **TP302230L**

MCFD2 (NM_139279) Human Recombinant Protein

Product data:

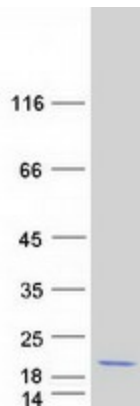
Product Type:	Recombinant Proteins
Description:	Recombinant protein of human multiple coagulation factor deficiency 2 (MCFD2), 1 mg
Species:	Human
Expression Host:	HEK293T
Expression cDNA Clone or AA Sequence:	>RC202230 protein sequence Red =Cloning site Green =Tags(s)
	MTMRSLLRTPFLCGLLWAFCAPGARAEPEAASFSGPGSMGLDKNTVHDQEHIMEHLEGVINKPEAEMSP Q ELQLHYFKMHDYDGNLLDGLLELSTAITHVHKEEGSEQAPLMSEDELINIIDGVLRRDDDKNNDGYIDYAE FAKSLQ
	TRTRPLEQKLISEEDLAANDILDYKDDDDKV
Tag:	C-Myc/DDK
Predicted MW:	13.5 kDa
Concentration:	>0.05 µg/µL as determined by microplate BCA method
Purity:	> 80% as determined by SDS-PAGE and Coomassie blue staining
Buffer:	25 mM Tris-HCl, 100 mM glycine, pH 7.3, 10% glycerol
Preparation:	Recombinant protein was captured through anti-DDK affinity column followed by conventional chromatography steps.
Note:	For testing in cell culture applications, please filter before use. Note that you may experience some loss of protein during the filtration process.
Storage:	Store at -80°C.
Stability:	Stable for 12 months from the date of receipt of the product under proper storage and handling conditions. Avoid repeated freeze-thaw cycles.
RefSeq:	<u>NP_644808</u>
Locus ID:	90411
UniProt ID:	<u>Q8NI22</u>



[View online »](#)

RefSeq Size:	4196
Cytogenetics:	2p21
RefSeq ORF:	438
Synonyms:	F5F8D; F5F8D2; LMAN1IP; SDNSF
Summary:	<p>This gene encodes a soluble luminal protein with two calmodulin-like EF-hand motifs at its C-terminus. This protein forms a complex with LMAN1 (lectin mannose binding protein 1; also known as ERGIC-53) that facilitates the transport of coagulation factors V (FV) and VIII (FVIII) from the endoplasmic reticulum to the Golgi apparatus via an endoplasmic reticulum Golgi intermediate compartment (ERGIC). Mutations in this gene cause combined deficiency of FV and FVIII (F5F8D); a rare autosomal recessive bleeding disorder characterized by mild to moderate bleeding and coordinate reduction in plasma FV and FVIII levels. This protein has also been shown to maintain stem cell potential in adult central nervous system and is a marker for testicular germ cell tumors. The 3' UTR of this gene contains a transposon-like human repeat element named 'THE 1'. A processed RNA pseudogene of this gene is on chromosome 6p22.1. Alternative splicing results in multiple transcript variants encoding distinct isoforms. [provided by RefSeq, Apr 2016]</p>

Product images:



Coomassie blue staining of purified MCFD2 protein (Cat# [TP302230]). The protein was produced from HEK293T cells transfected with MCFD2 cDNA clone (Cat# [RC202230]) using MegaTran 2.0 (Cat# [TT210002]).