

## Product datasheet for TP302227M

### LCMT2 (NM\_014793) Human Recombinant Protein

#### Product data:

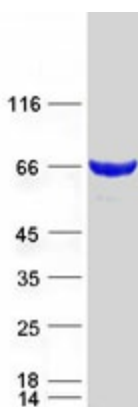
<b>Product Type:</b>	Recombinant Proteins
<b>Description:</b>	Recombinant protein of human leucine carboxyl methyltransferase 2 (LCMT2), 100 µg
<b>Species:</b>	Human
<b>Expression Host:</b>	HEK293T
<b>Expression cDNA Clone or AA Sequence:</b>	>RC202227 protein sequence <b>Red</b> =Cloning site <b>Green</b> =Tags(s)
	<p>MGPRSRERRAGAVQNTNDSSALSKRSLAARGYVQDPFAALLVPGAARRAPLIHRGYYVRARAVRHCVRAF LEQIGAPQAALRAQILSLGAGFDSL YFRLKTAGRLARA AVWEVDFPDVARRKAERIGETPELCALTGPFE RGEPASALCFESADY CILGLDLRQLQRVEEALGAAGLDAASPTLLLAEAVLTYLEPESAAAALIAWAAQRF PNALFVVEEQMRPQDAFGQFMLQHFRQLNSPLHGLERFPDVEAQRRLFLQAGWTACGAVDMNEFYHCFLP AEERRRVENIEPFDEFEEWHLKCAHYFILAASRGDTLSHTLVFSPSEAFPRVNPASPSGVFPASVVSSEG QVPNLKRYGHASVFLSPD VILSAGGFGEQEGRHCRV SQFHLLSRDCDSEWKGSQIGSCGTGVQWDGRLYH TMTRLSESRV LVLGGRLSPVSPALGVLQLHFFKSEDNNTEDLKVTITKAGRKDDSTLCCWRHSTTEVSCQ NQEYLFVYGGRSVVEPVLSDWHFLHVGTMAWVRIPVEGEVPEARHSHSACTWQGGALIAGGLGASEEPLN SVLFLRPISCGFLWESVDIQPPITPRYSHTAHLVNGKLLLVGGIWIHSSSFPGVTVINLTTGLSSEYQID TTYVPWPLMLHNHTSILLPEEQQLLLGGGGNCFSGFTYFNPHTVTLDLSSLSAGQ</p> <p><b>TRTRPLEQKLISEEDLAANDILDYKDDDDKV</b></p>
<b>Tag:</b>	C-Myc/DDK
<b>Predicted MW:</b>	75.4 kDa
<b>Concentration:</b>	>0.05 µg/µL as determined by microplate BCA method
<b>Purity:</b>	> 80% as determined by SDS-PAGE and Coomassie blue staining
<b>Buffer:</b>	25 mM Tris-HCl, 100 mM glycine, pH 7.3, 10% glycerol
<b>Preparation:</b>	Recombinant protein was captured through anti-DDK affinity column followed by conventional chromatography steps.
<b>Note:</b>	For testing in cell culture applications, please filter before use. Note that you may experience some loss of protein during the filtration process.
<b>Storage:</b>	Store at -80°C.



[View online »](#)

<b>Stability:</b>	Stable for 12 months from the date of receipt of the product under proper storage and handling conditions. Avoid repeated freeze-thaw cycles.
<b>RefSeq:</b>	<a href="#">NP_055608</a>
<b>Locus ID:</b>	9836
<b>UniProt ID:</b>	<a href="#">O60294</a>
<b>RefSeq Size:</b>	2860
<b>Cytogenetics:</b>	15q15.3
<b>RefSeq ORF:</b>	2058
<b>Synonyms:</b>	PPM2; TYW4
<b>Summary:</b>	The protein encoded by this intronless gene belongs to the highly variable methyltransferase superfamily. This gene is the inferred homolog of the <i>Saccharomyces cerevisiae</i> carboxymethyltransferase gene PPM2 that is essential for the synthesis of the hypermodified guanosine Wybutosine (yW). [provided by RefSeq, Jul 2008]
<b>Protein Families:</b>	Druggable Genome
<b>Protein Pathways:</b>	Alzheimer's disease, Androgen and estrogen metabolism, Cardiac muscle contraction, Histidine metabolism, Huntington's disease, Metabolic pathways, Oxidative phosphorylation, Parkinson's disease, Selenoamino acid metabolism, Tyrosine metabolism

### Product images:



Coomassie blue staining of purified LCMT2 protein (Cat# [TP302227]). The protein was produced from HEK293T cells transfected with LCMT2 cDNA clone (Cat# [RC202227]) using MegaTran 2.0 (Cat# [TT210002]).