

Product datasheet for **TP30227L**

LCMT2 (NM_014793) Human Recombinant Protein

Product data:

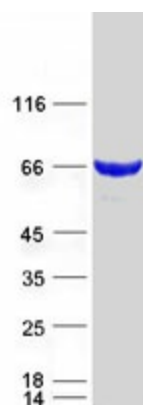
Product Type:	Recombinant Proteins
Description:	Recombinant protein of human leucine carboxyl methyltransferase 2 (LCMT2), 1 mg
Species:	Human
Expression Host:	HEK293T
Expression cDNA Clone or AA Sequence:	>RC20227 protein sequence Red =Cloning site Green =Tags(s)
	<p>MGPRSRERRAGAVQNTNDSSALSKRSLAARGVYQDPFAALLVPGAARRAPLIHRGYYVRARAVRHCVRAF LEQIGAPQAALRAQILSLGAGFDSLIFRLKTAGRLARAAVWEVDFPDVARRKAERIGETPELCALTGPFE RGEPASALCFESADYCILGLDLRQLQRVEEALGAAGLDAASPTLLLAEAVLTYLEPESAAAALIAWAAQRF PNALFVVEEQMRPQDAFGQFMLQHFRQLNSPLHGLERFPDVEAQRRLQAGWTACGAVDMNEFYHCFLP AEERRRVENIEPFDEFEEWHLKCAHYFILAASRGDTLSHTLVFPSSEAFPRVNPASPSGVFPASVVSSEG QVPNLKRYGHASVFLSPDVILSAGGFGEQEGRHCRVSVQFHLLSRDCDSEWKGSQIGSCGTGVQWDGRLYH TMTRLSESRVLVLGGRLSPVSPALGVLQLHFFKSEDNNTEDLKVTITKAGRKDDSTLCCWRHSTTEVSCQ NQEYLFVYGGRSVVEPVLSDWHFLHVGTMAWVRPVEGEVPEARHSHSACTWQGGALIAGGLGASEEPLN SVLFLRPISCGFLWESVDIQPPITPRYSHTAHLVNGKLLLVGGIWIHSSSPGVTVINLTTGLSSEYQID TTYVPWPLMLHNHTSILLPEEQQLLLGGGGNCFSGFTYFNPHTVTLDLSSLSAGQ</p> <p>TRTRPLEQKLISEEDLAANDILDYKDDDDKV</p>
Tag:	C-Myc/DDK
Predicted MW:	75.4 kDa
Concentration:	>0.05 µg/µL as determined by microplate BCA method
Purity:	> 80% as determined by SDS-PAGE and Coomassie blue staining
Buffer:	25 mM Tris-HCl, 100 mM glycine, pH 7.3, 10% glycerol
Preparation:	Recombinant protein was captured through anti-DDK affinity column followed by conventional chromatography steps.
Note:	For testing in cell culture applications, please filter before use. Note that you may experience some loss of protein during the filtration process.
Storage:	Store at -80°C.



[View online »](#)

Stability:	Stable for 12 months from the date of receipt of the product under proper storage and handling conditions. Avoid repeated freeze-thaw cycles.
RefSeq:	NP_055608
Locus ID:	9836
UniProt ID:	O60294
RefSeq Size:	2860
Cytogenetics:	15q15.3
RefSeq ORF:	2058
Synonyms:	PPM2; TYW4
Summary:	The protein encoded by this intronless gene belongs to the highly variable methyltransferase superfamily. This gene is the inferred homolog of the <i>Saccharomyces cerevisiae</i> carboxymethyltransferase gene PPM2 that is essential for the synthesis of the hypermodified guanosine Wybutosine (yW). [provided by RefSeq, Jul 2008]
Protein Families:	Druggable Genome
Protein Pathways:	Alzheimer's disease, Androgen and estrogen metabolism, Cardiac muscle contraction, Histidine metabolism, Huntington's disease, Metabolic pathways, Oxidative phosphorylation, Parkinson's disease, Selenoamino acid metabolism, Tyrosine metabolism

Product images:



Coomassie blue staining of purified LCMT2 protein (Cat# [TP302227]). The protein was produced from HEK293T cells transfected with LCMT2 cDNA clone (Cat# [RC202227]) using MegaTran 2.0 (Cat# [TT210002]).