

## Product datasheet for TP302223

### HYLS1 (NM\_145014) Human Recombinant Protein

#### Product data:

Product Type:	Recombinant Proteins
Description:	Recombinant protein of human hydrolethalus syndrome 1 (HYLS1), transcript variant 1, 20 µg
Species:	Human
Expression Host:	HEK293T
Expression cDNA Clone or AA Sequence:	>RC202223 protein sequence <b>Red</b> =Cloning site <b>Green</b> =Tags(s)
	<p>MDPEERMLAAATAFTHIRAGQGEGDVRREAQSIQYDPYSKASVAPGKRPALPVQLQYPHVESNVPSETVS EASQRLRKPVMKRKVLRRKPDGEVLVTDESIIESESGTENDQDLWDLRQRLMNVQFQEDKESFDVSQK FNLPEYQGISQDQLICSLQREGMGSPAYEQDLIVASRPKSFILPKLDQLSRNRGKTRVARYFEYKRDW DSIRLPGEDHRKELRWGVREQMLCRAEPQSKPQHIVPNNYLVPTTEKKRSALRWGVRCDLANGVIPRKL FPLSPS</p> <p><b>TRTRPLEQKLISEEDLAANDILDYKDDDDKV</b></p>
Tag:	C-Myc/DDK
Predicted MW:	34.2 kDa
Concentration:	>0.05 µg/µL as determined by microplate BCA method
Purity:	> 80% as determined by SDS-PAGE and Coomassie blue staining
Buffer:	25 mM Tris-HCl, 100 mM glycine, pH 7.3, 10% glycerol
Preparation:	Recombinant protein was captured through anti-DDK affinity column followed by conventional chromatography steps.
Note:	For testing in cell culture applications, please filter before use. Note that you may experience some loss of protein during the filtration process.
Storage:	Store at -80°C.
Stability:	Stable for 12 months from the date of receipt of the product under proper storage and handling conditions. Avoid repeated freeze-thaw cycles.
RefSeq:	<u><a href="#">NP_659451</a></u>
Locus ID:	219844



[View online »](#)

UniProt ID: [Q96M11](#), [A0A024R3K0](#)

RefSeq Size: 1829

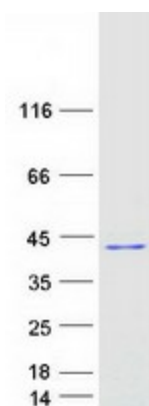
Cytogenetics: 11q24.2

RefSeq ORF: 858

Synonyms: HLS

**Summary:** This gene encodes a protein localized to the cytoplasm. Mutations in this gene are associated with hydrolethalus syndrome. Multiple alternatively spliced variants, encoding the same protein, have been identified. [provided by RefSeq, Oct 2008]

### Product images:



Coomassie blue staining of purified HYLS1 protein (Cat# TP302223). The protein was produced from HEK293T cells transfected with HYLS1 cDNA clone (Cat# [RC202223]) using MegaTran 2.0 (Cat# [TT210002]).