

Product datasheet for **TP302217M**

Endothelin 1 (EDN1) (NM_001955) Human Recombinant Protein

Product data:

Product Type: Recombinant Proteins

Description: Recombinant protein of human endothelin 1 (EDN1), 100 µg

Species: Human

Expression Host: HEK293T

**Expression cDNA Clone
or AA Sequence:** >RC202217 protein sequence
Red=Cloning site **Green**=Tags(s)

MDYLLMIFSLLFVACQGAPETA VLGAELSAVGENGG EKPTSPPPWRLRRSKRCS CSSLMDKECVYFCHLD
I I W V N T P E H W P Y G L G S P R S K R A L E N L L P T K A T D R E N R C Q C A S Q K D K K C W N F C Q A G K E L R A E D I M E K D W N
N H K K G K D C S K L G K K C I Y Q Q L V R G R K I R S S E E H L R Q T R S E T M R N S V K S S F H D P K L K G N P S R E R Y V T H N R A
H W

TRTRPLEQKLISEEDLAANDILDYKDDDDKV

Tag: C-Myc/DDK

Predicted MW: 22.4 kDa

Concentration: >0.05 µg/µL as determined by microplate BCA method

Purity: > 80% as determined by SDS-PAGE and Coomassie blue staining

Buffer: 25 mM Tris-HCl, 100 mM glycine, pH 7.3, 10% glycerol

Preparation: Recombinant protein was captured through anti-DDK affinity column followed by conventional chromatography steps.

Note: For testing in cell culture applications, please filter before use. Note that you may experience some loss of protein during the filtration process.

Storage: Store at -80°C.

Stability: Stable for 12 months from the date of receipt of the product under proper storage and handling conditions. Avoid repeated freeze-thaw cycles.

RefSeq: [NP_001946](#)

Locus ID: 1906

UniProt ID: [P05305](#), [Q6FH53](#)



[View online »](#)

RefSeq Size: 2112

Cytogenetics: 6p24.1

RefSeq ORF: 636

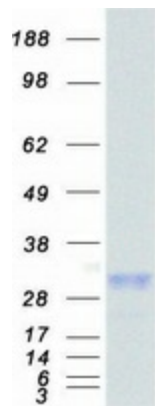
Synonyms: ARCND3; ET1; HDLCQ7; PPET1; QME

Summary: This gene encodes a preproprotein that is proteolytically processed to generate a secreted peptide that belongs to the endothelin/sarafotoxin family. This peptide is a potent vasoconstrictor and its cognate receptors are therapeutic targets in the treatment of pulmonary arterial hypertension. Aberrant expression of this gene may promote tumorigenesis. Alternative splicing results in multiple transcript variants. [provided by RefSeq, Oct 2015]

Protein Families: Druggable Genome, Secreted Protein

Protein Pathways: Melanogenesis

Product images:



Coomassie blue staining of purified EDN1 protein (Cat# [TP302217]). The protein was produced from HEK293T cells transfected with EDN1 cDNA clone (Cat# [RC202217]) using MegaTran 2.0 (Cat# [TT210002]).