

## Product datasheet for **TP302216**

### EMP3 (NM\_001425) Human Recombinant Protein

#### Product data:

**Product Type:** Recombinant Proteins

**Description:** Recombinant protein of human epithelial membrane protein 3 (EMP3), 20 µg

**Species:** Human

**Expression Host:** HEK293T

**Expression cDNA Clone  
or AA Sequence:** >RC202216 protein sequence  
**Red**=Cloning site **Green**=Tags(s)

MSLLLLVVSALHILILILLFVATLDKSWWTLPGKESLNLWYDCTWNNDTKTWACSNVSENGWLKAVQVLM  
VLSLILCCLSFILFMFQLYTMRRGGLFYATGLCQLCTSAVFTGALIYAIHAEIELEKHPRGGSFGYCFA  
LAWVAFPLALVSGIYIHLRKRE

**TR**TRPLEQKLISEEDLAANDILDYKDDDDKV

**Tag:** C-Myc/DDK

**Predicted MW:** 18.2 kDa

**Concentration:** >0.05 µg/µL as determined by microplate BCA method

**Purity:** > 80% as determined by SDS-PAGE and Coomassie blue staining

**Buffer:** 25 mM Tris-HCl, 100 mM glycine, pH 7.3, 10% glycerol

**Preparation:** Recombinant protein was captured through anti-DDK affinity column followed by conventional chromatography steps.

**Note:** For testing in cell culture applications, please filter before use. Note that you may experience some loss of protein during the filtration process.

**Storage:** Store at -80°C.

**Stability:** Stable for 12 months from the date of receipt of the product under proper storage and handling conditions. Avoid repeated freeze-thaw cycles.

**RefSeq:** [NP\\_001416](#)

**Locus ID:** 2014

**UniProt ID:** [P54852](#), [A0A024QZF8](#)

**RefSeq Size:** 850



[View online »](#)

Cytogenetics: 19q13.33

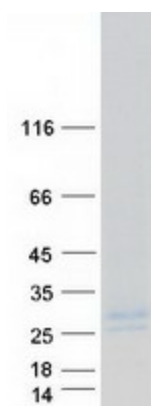
RefSeq ORF: 489

Synonyms: YMP

**Summary:** The protein encoded by this gene belongs to the PMP-22/EMP/MP20 family of proteins. The protein contains four transmembrane domains and two N-linked glycosylation sites. It is thought to be involved in cell proliferation, cell-cell interactions and function as a tumor suppressor. Alternative splicing results in multiple transcript variants. [provided by RefSeq, Sep 2015]

**Protein Families:** Transmembrane

### Product images:



Coomassie blue staining of purified EMP3 protein (Cat# TP302216). The protein was produced from HEK293T cells transfected with EMP3 cDNA clone (Cat# [RC202216]) using MegaTran 2.0 (Cat# [TT210002]).