

Product datasheet for **TP302207**

PDK3 (NM_005391) Human Recombinant Protein

Product data:

Product Type:	Recombinant Proteins
Description:	Recombinant protein of human pyruvate dehydrogenase kinase, isozyme 3 (PDK3), transcript variant 2
Species:	Human
Expression Host:	HEK293T
Tag:	C-Myc/DDK
Predicted MW:	46.8 kDa
Concentration:	>50 ug/mL as determined by microplate BCA method
Purity:	> 80% as determined by SDS-PAGE and Coomassie blue staining
Buffer:	25 mM Tris.HCl, pH 7.3, 100 mM glycine, 10% glycerol
Preparation:	Recombinant protein was captured through anti-DDK affinity column followed by conventional chromatography steps.
Storage:	Store at -80°C.
Stability:	Stable for 12 months from the date of receipt of the product under proper storage and handling conditions. Avoid repeated freeze-thaw cycles.
RefSeq:	NP_005382
Locus ID:	5165
RefSeq Size:	1803
Cytogenetics:	Xp22.11
RefSeq ORF:	1218
Synonyms:	CMTX6; GS1-358P8.4



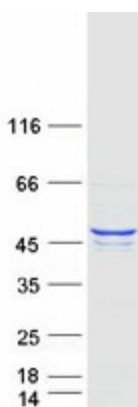
[View online »](#)

Summary:

The pyruvate dehydrogenase (PDH) complex is a nuclear-encoded mitochondrial multienzyme complex that catalyzes the overall conversion of pyruvate to acetyl-CoA and CO₂. It provides the primary link between glycolysis and the tricarboxylic acid (TCA) cycle, and thus is one of the major enzymes responsible for the regulation of glucose metabolism. The enzymatic activity of PDH is regulated by a phosphorylation/dephosphorylation cycle, and phosphorylation results in inactivation of PDH. The protein encoded by this gene is one of the three pyruvate dehydrogenase kinases that inhibits the PDH complex by phosphorylation of the E1 alpha subunit. This gene is predominantly expressed in the heart and skeletal muscles. Alternatively spliced transcript variants encoding different isoforms have been found for this gene. [provided by RefSeq, Mar 2010]

Protein Families:

Druggable Genome, Protein Kinase

Product images:

Coomassie blue staining of purified PDK3 protein (Cat# TP302207). The protein was produced from HEK293T cells transfected with PDK3 cDNA clone (Cat# [RC202207]) using MegaTran 2.0 (Cat# [TT210002]).