

## Product datasheet for **TP302198M**

### Butyrylcholinesterase (BCHE) (NM\_000055) Human Recombinant Protein

#### Product data:

|                                       |  |
|---------------------------------------|--|
| Product Type:                         | Recombinant Proteins   |
| Description:                          | Recombinant protein of human butyrylcholinesterase (BCHE), 100 µg            |
| Species:                              | Human  |
| Expression Host:                      | HEK293T  |
| Expression cDNA Clone or AA Sequence: | >RC202198 protein sequence<br><b>Red</b> =Cloning site <b>Green</b> =Tags(s) |

MHskvtIICIRFLFWflllCMLIGKshTEdDIIIATKNGKVRGMNLTvFGGTVtAFLGIPYAQPPLGRLR  
FKKpQSLTKWSDIWNATKYANSCCQNIHQSFpGFHGSEMWNPNtDLSEdCLYLNvWIPAPKPKNATVLIW  
IYGGGFQGTSSLHVYDgKFLARVERVIVVSMNYRVGALGFLALPGNPEAPGNMGLFDQQLALQWVQKNI  
AAFGGNPKSVTLFGESAGAASVSLHLLSPGSHSLFTRAILQSGSFNAPWAVtSLYEARNRTLNLAKLTGC  
SRENETEIIKCLRnkDPQEILLNEAFVVPYGTPLSVNFGPTVDGDFLTdMpdILLELgQfKKTQILVGVN  
KDEGTAFLVYGAPGFSKDNNSIITRKEfQeGLKIFFPGVSEFGKESILFHYTDWVDDQRPENyREALGDV  
VGDYNfICPALEfTKKFSEWGnNAFFyYfEHRSSKLPWPEWmGVMHGyEIEFVfGLPLERRDNYTKAEeI  
LSRSIVKRWANfAKYGNPNETQNNSTSWPVFKSTeQKYLTlNtESTRIMTKLRAQqCRfWtSFFPKVLEM  
TGNIDEAEWewKAGfHRWNNyMMDWKNQfNDYtSKKESCVGL

**TRTRPLEQKLISEEDLAANDILDYKDDDDKV**

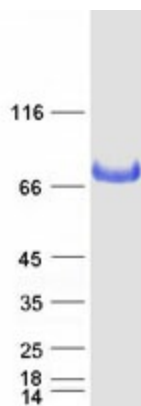
|                |  |
|----------------|--|
| Tag:           | C-Myc/DDK  |
| Predicted MW:  | 68.2 kDa   |
| Concentration: | >0.05 µg/µL as determined by microplate BCA method   |
| Purity:        | > 80% as determined by SDS-PAGE and Coomassie blue staining  |
| Buffer:        | 25 mM Tris-HCl, 100 mM glycine, pH 7.3, 10% glycerol   |
| Preparation:   | Recombinant protein was captured through anti-DDK affinity column followed by conventional chromatography steps.                                     |
| Note:          | For testing in cell culture applications, please filter before use. Note that you may experience some loss of protein during the filtration process. |
| Storage:       | Store at -80°C.  |



[View online »](#)

|                          |  |
|--------------------------|--|
| <b>Stability:</b>        | Stable for 12 months from the date of receipt of the product under proper storage and handling conditions. Avoid repeated freeze-thaw cycles.  |
| <b>RefSeq:</b>           | <a href="#">NP_000046</a>  |
| <b>Locus ID:</b>         | 590  |
| <b>UniProt ID:</b>       | <a href="#">P06276</a>   |
| <b>RefSeq Size:</b>      | 2461   |
| <b>Cytogenetics:</b>     | 3q26.1   |
| <b>RefSeq ORF:</b>       | 1806   |
| <b>Synonyms:</b>         | BCHEd; CHE1; CHE2; E1  |
| <b>Summary:</b>          | This gene encodes a cholinesterase enzyme and member of the type-B carboxylesterase/lipase family of proteins. The encoded enzyme exhibits broad substrate specificity and is involved in the detoxification of poisons including organophosphate nerve agents and pesticides, and the metabolism of drugs including cocaine, heroin and aspirin. Humans homozygous for certain mutations in this gene exhibit prolonged apnea after administration of the muscle relaxant succinylcholine. [provided by RefSeq, Jul 2016] |
| <b>Protein Families:</b> | Druggable Genome, Transmembrane  |

### Product images:



Coomassie blue staining of purified BCHE protein (Cat# [TP302198]). The protein was produced from HEK293T cells transfected with BCHE cDNA clone (Cat# [RC202198]) using MegaTran 2.0 (Cat# [TT210002]).