

Product datasheet for **TP302198L**

Butyrylcholinesterase (BCHE) (NM_000055) Human Recombinant Protein

Product data:

Product Type:	Recombinant Proteins
Description:	Recombinant protein of human butyrylcholinesterase (BCHE), 1 mg
Species:	Human
Expression Host:	HEK293T
Expression cDNA Clone or AA Sequence:	>RC202198 protein sequence Red =Cloning site Green =Tags(s)

MHSKVTIICIRFLFWFLLLCMLIGKSHTEDDIIIATKNGKVRGMNLTVFGGTVTAFLGIPYAQPPLGRLR
FKKPQSLTKWSDIWNATKYANSCCQNIQSFPGFHGSEMWNPNNTDLSDECLYLNWIPAPKPKNATVLIW
IYGGGFQTGTSSLHVYDYGKFLARVERVIVVSMNYRVGALGFLALPGNPEAPGNMGLFDQQLALQWVQKNI
AAFGGNPKSVTLFGESAGAASVSLHLLSPGSHSLFTRAILQSGSFNAPWAVTSLYEARNRTLNLAKLTGC
SRENETEIIKCLRNDKPQEILLNEAFVVPYGTPLSVNFGPTVDGDFLTDMPDILLELGQFKKTQILVGVN
KDEGTAFLVYGAPGFSKDNNSIITRKEFQEGLKIFFPGVSEFGKESILFHYTDWVDDQRPENYREALGDV
VGDYNFICPALEFTKKFSEWGNNAFFYFEHRSSKLPWPEWMGVMHGYEIEFVGLPLERRDNYTKAEEI
LSRSIVKRWANFAKYGNPNETQNNSTSWPVFKSTEQKYLTLNTESTRIMTKLRAQQCRFWSFFPKVLEM
TGNIDEAEWEWKAGFHRWNNYMMDWKNQFNDYTSKKESCVGL

TRTRPLEQKLISEEDLAANDILDYKDDDDKV

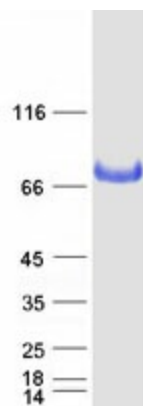
Tag:	C-Myc/DDK
Predicted MW:	68.2 kDa
Concentration:	>0.05 µg/µL as determined by microplate BCA method
Purity:	> 80% as determined by SDS-PAGE and Coomassie blue staining
Buffer:	25 mM Tris-HCl, 100 mM glycine, pH 7.3, 10% glycerol
Preparation:	Recombinant protein was captured through anti-DDK affinity column followed by conventional chromatography steps.
Note:	For testing in cell culture applications, please filter before use. Note that you may experience some loss of protein during the filtration process.
Storage:	Store at -80°C.



[View online »](#)

Stability:	Stable for 12 months from the date of receipt of the product under proper storage and handling conditions. Avoid repeated freeze-thaw cycles.
RefSeq:	NP_000046
Locus ID:	590
UniProt ID:	P06276
RefSeq Size:	2461
Cytogenetics:	3q26.1
RefSeq ORF:	1806
Synonyms:	BCHEd; CHE1; CHE2; E1
Summary:	This gene encodes a cholinesterase enzyme and member of the type-B carboxylesterase/lipase family of proteins. The encoded enzyme exhibits broad substrate specificity and is involved in the detoxification of poisons including organophosphate nerve agents and pesticides, and the metabolism of drugs including cocaine, heroin and aspirin. Humans homozygous for certain mutations in this gene exhibit prolonged apnea after administration of the muscle relaxant succinylcholine. [provided by RefSeq, Jul 2016]
Protein Families:	Druggable Genome, Transmembrane

Product images:



Coomassie blue staining of purified BCHE protein (Cat# [TP302198]). The protein was produced from HEK293T cells transfected with BCHE cDNA clone (Cat# [RC202198]) using MegaTran 2.0 (Cat# [TT210002]).