

Product datasheet for TP302191

Smoothelin (SMTN) (NM_134269) Human Recombinant Protein

Product data:

Product Type:	Recombinant Proteins
Description:	Recombinant protein of human smoothelin (SMTN), transcript variant 2, 20 µg
Species:	Human
Expression Host:	HEK293T
Expression cDNA Clone or AA Sequence:	>RC202191 protein sequence Red=Cloning site Green=Tags(s)

MADEALAGLDEGALRKLLLEVADLAERRRIRSAIRELQRQELEREEEEALASKRFRAERQDNKENWLHSQQ
REAEQRAALARLAGQLESMNDVEELTALLRSAGEYEERKLIRAAIRRVRAQEIEAATLAGRLYSGRPNNG
SREDSKGLAAHRLEQCEVPEREEQEQAEVSKPTPTPEGTSQDVTTVTLRRAPPGSTSSSPASPSSPT
PASPEPPLEPAEAQCLTAEVPGSPEPPPSPPKTTSPESQPTLPSTEGQVVNKLSSGPKETPAAQSPT
GPSDTKRADVAGPRPCQRSLSVLSPRQPAQNRESTPLASGPSSFRAGSVRDRVHKFTSDSPMAARLQDG
TPQAALSPLTPARLLGPSLTSTTPASSSSGSSSRGPSDTSSRFSKEQRGVAQPLAQLRSCPQEEGPRGRG
LAARPLENRAGGPVAREEPPGAPLPVAVGTAEPGGSMKTTFTIEIKDGRGQASTGRVLLPTGNQRAELTL
GLRAPPTLLSTSSGGKSTITRVNSPGTLARLGSVTHVTSFSSHAPSSRGGCSIKMEPEPAEPLAAAVEAA
NGAEQTRVNKAPEGRSPLSAEELMTIEDEGLDKMLDQSTDFEERKLIRAAALRELQRKRDRDKERERR
LQEARGRPGEGRGNTATETTRHSQRAADGSAVSTVTKTERLVHSNDGTRTARTTTVESSFVRRSENGSG
STMMQTKTFSSSSSSKMGSIQDREDQASPRAGSLAALEKQAEKKKELMKAQSLPKTSASQARKAMIEK
LEKEGAAGSPGGPRAAVQRSTSGVNPANSIQMLLDWCRAKTRGYEHVDIQNFSSWSGMAFCALVHN
FFPEAFDYGQLSPQNRQNFVAFSSAETHADCPQLLDTEDMVRLREPDWKCVYTYIQEFYRCLVQKGLV
KTKKS

TRTRPLEQKLISEEDLAANDILDYKDDDDKV

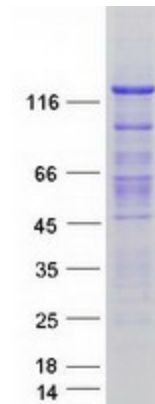
Tag:	C-Myc/DDK
Predicted MW:	98.7 kDa
Concentration:	>0.05 µg/µL as determined by microplate BCA method
Purity:	> 80% as determined by SDS-PAGE and Coomassie blue staining
Buffer:	25 mM Tris-HCl, 100 mM glycine, pH 7.3, 10% glycerol
Preparation:	Recombinant protein was captured through anti-DDK affinity column followed by conventional chromatography steps.



[View online »](#)

Note:	For testing in cell culture applications, please filter before use. Note that you may experience some loss of protein during the filtration process.
Storage:	Store at -80°C.
Stability:	Stable for 12 months from the date of receipt of the product under proper storage and handling conditions. Avoid repeated freeze-thaw cycles.
RefSeq:	NP_599031
Locus ID:	6525
UniProt ID:	P53814
RefSeq Size:	3332
Cytogenetics:	22q12.2
RefSeq ORF:	2745
Summary:	This gene encodes a structural protein that is found exclusively in contractile smooth muscle cells. It associates with stress fibers and constitutes part of the cytoskeleton. This gene is localized to chromosome 22q12.3, distal to the TUPLE1 locus and outside the DiGeorge syndrome deletion. Alternative splicing of this gene results in multiple transcript variants encoding distinct isoforms. [provided by RefSeq, May 2011]

Product images:



Coomassie blue staining of purified SMTN protein (Cat# TP302191). The protein was produced from HEK293T cells transfected with SMTN cDNA clone (Cat# [RC202191]) using MegaTran 2.0 (Cat# [TT210002]).