

## Product datasheet for TP302189

### KEAP1 (NM\_203500) Human Recombinant Protein

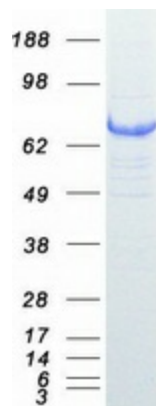
#### Product data:

Product Type:	Recombinant Proteins
Description:	Recombinant protein of human kelch-like ECH-associated protein 1 (KEAP1), transcript variant 1, 20 µg
Species:	Human
Expression Host:	HEK293T
Expression cDNA Clone or AA Sequence:	>RC202189 protein sequence <b>Red</b> =Cloning site <b>Green</b> =Tags(s)
	<p>MQPDPSPGAGACCRFLPLQSQCEGAGDAVMYASTECKAEVTPSQHGNRTFSYTLLEDHTKQAFGIMNE L RLSQQLCDVTLQVKYQDAPAAQFMAHKVWLASSPVFKAMFTNGLREQGMEVVSIEGIHPKVMERLIEFA YTASISMGEKCVLHVMNGAVMYQIDSVVRACSDFLVQQLDPSNAIGIANFAEQIGCVELHQRAREYIYMH FGEVAKQEEFFNLSHCQLVTLISRDDLNVRCSEVVFHACINWVKYDCEQRRFYVQALLRAVRCHSLTPNF LQMQLQKCEILQSDSRCKDYLVKIFEELTLHKPTQVMPCRAPKVGRLIYTAGGYFRQSLSYLEAYNPSDG TWLRLADLQVPRSLAGCVVGGLLYAVGGRRNSPDGNTDSSALDCYNPMTNQWSPCAPMSVPRNRIGV GV IDGHIYAVGGSHGCIHHNSVERYEPERDEWHLVAPMLTRRIGVGVAVLNRLLYAVGGFDGTNRLNSAECY YPERNEWRMITAMNTIRSGAGVCLHNCIYAAGGYDGDQLNSVERYDVETETWTFVAPMKHRRSALGI T VHQGRIYVLGGYDGHFTLDSVECYDPD TD TWSEVTRMTSGRSGVGVAVTMEPCRKQIDQQNCTC</p> <p><b>TRTRPLEQKLISEEDLAANDILDYKDDDDKV</b></p>
Tag:	C-Myc/DDK
Predicted MW:	69.5 kDa
Concentration:	>0.1 µg/µL as determined by microplate BCA method
Purity:	> 80% as determined by SDS-PAGE and Coomassie blue staining
Buffer:	25 mM Tris-HCl, 100 mM glycine, pH 7.3, 10% glycerol
Preparation:	Recombinant protein was captured through anti-DDK affinity column followed by conventional chromatography steps.



[View online »](#)

<b>Note:</b>	For testing in cell culture applications, please filter before use. Note that you may experience some loss of protein during the filtration process.
<b>Storage:</b>	Store at -80°C.
<b>Stability:</b>	Stable for 12 months from the date of receipt of the product under proper storage and handling conditions. Avoid repeated freeze-thaw cycles.
<b>RefSeq:</b>	<a href="#">NP_987096</a>
<b>Locus ID:</b>	9817
<b>UniProt ID:</b>	<a href="#">Q14145</a>
<b>RefSeq Size:</b>	2606
<b>Cytogenetics:</b>	19p13.2
<b>RefSeq ORF:</b>	1872
<b>Synonyms:</b>	INrf2; KLHL19
<b>Summary:</b>	This gene encodes a protein containing KELCH-1 like domains, as well as a BTB/POZ domain. Kelch-like ECH-associated protein 1 interacts with NF-E2-related factor 2 in a redox-sensitive manner and the dissociation of the proteins in the cytoplasm is followed by transportation of NF-E2-related factor 2 to the nucleus. This interaction results in the expression of the catalytic subunit of gamma-glutamylcysteine synthetase. Two alternatively spliced transcript variants encoding the same isoform have been found for this gene. [provided by RefSeq, Jul 2008]
<b>Protein Families:</b>	Transcription Factors
<b>Protein Pathways:</b>	Ubiquitin mediated proteolysis

**Product images:**

Coomassie blue staining of purified KEAP1 protein (Cat# TP302189). The protein was produced from HEK293T cells transfected with KEAP1 cDNA clone (Cat# [RC202189]) using MegaTran 2.0 (Cat# [TT210002]).