

Product datasheet for **TP302188L**

MAGP1 (MFAP2) (NM_017459) Human Recombinant Protein

Product data:

Product Type:	Recombinant Proteins
Description:	Recombinant protein of human microfibrillar-associated protein 2 (MFAP2), transcript variant 1, 1 mg
Species:	Human
Expression Host:	HEK293T
Expression cDNA Clone or AA Sequence:	>RC202188 protein sequence Red =Cloning site Green =Tags(s)
	MRAAYLFLFLPAGLLAQQGQYDLDPFPDPHVQYTHYSDQIDNPDIYDYQEVTPRPSEEQFQFQSQQQV QQEVIPAPTPEPGNAELEPTPEGPLDCREEQYPCTRLYSIHRPCKQCLNEVCFYSLRRVYINKEICVRT VCAHEELLRADLCRDKFSKCGVMASGLCQSVAAASCARSCGSC
	TRTRPLEQKLISEEDLAANDILDYKDDDDKV
Tag:	C-Myc/DDK
Predicted MW:	18.9 kDa
Concentration:	>0.05 µg/µL as determined by microplate BCA method
Purity:	> 80% as determined by SDS-PAGE and Coomassie blue staining
Buffer:	25 mM Tris-HCl, 100 mM glycine, pH 7.3, 10% glycerol
Preparation:	Recombinant protein was captured through anti-DDK affinity column followed by conventional chromatography steps.
Note:	For testing in cell culture applications, please filter before use. Note that you may experience some loss of protein during the filtration process.
Storage:	Store at -80°C.
Stability:	Stable for 12 months from the date of receipt of the product under proper storage and handling conditions. Avoid repeated freeze-thaw cycles.
RefSeq:	NP_059453
Locus ID:	4237
UniProt ID:	P55001 , A0A024RA94



[View online »](#)

RefSeq Size: 1105

Cytogenetics: 1p36.13

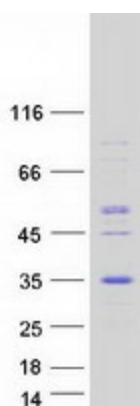
RefSeq ORF: 549

Synonyms: MAGP; MAGP-1; MAGP1

Summary: Microfibrillar-associated protein 2 is a major antigen of elastin-associated microfibrils and a candidate for involvement in the etiology of inherited connective tissue diseases. Four transcript variants encoding two different isoforms have been found for this gene. [provided by RefSeq, Sep 2008]

Protein Families: Secreted Protein

Product images:



Coomassie blue staining of purified MFAP2 protein (Cat# [TP302188]). The protein was produced from HEK293T cells transfected with MFAP2 cDNA clone (Cat# [RC202188]) using MegaTran 2.0 (Cat# [TT210002]).