

## Product datasheet for **TP302183**

### RPIA (NM\_144563) Human Recombinant Protein

#### Product data:

Product Type:	Recombinant Proteins
Description:	Recombinant protein of human ribose 5-phosphate isomerase A (RPIA), 20 µg
Species:	Human
Expression Host:	HEK293T
Expression cDNA Clone or AA Sequence:	>RC202183 representing NM_144563 <b>Red</b> =Cloning site <b>Green</b> =Tags(s)

MQRPGPFSTLYGRVLAPLPGRAGGAASGGGGNSWDLPGSHVRLPGRAQSGTRGGAGNTSTSCGDSNSICP  
APSTMSKAEAEAKKLAGRAAVENHVRNNQVLGIGSGSTIVHAVQRIAERVKQENLNLVCIPTSFQARQLIL  
QYGLTSLDLRHPIDLAIIDGADEVDADLNLIKGGGGCLTQEKIVAGYASRFVIADFRKDSKNLGDQWH  
KGIPIEVIPMAYVPVSRVAVSQKFGGVVELRMAVNKAGPVVTDNGNFILDWKFDRVHKWSEVNTAIKMIPG  
VVDTGLFINMAERVYFGMQDGSVNMREKPFCC

**TRTRPLEQKLISEEDLAANDILDYKDDDDKV**

Tag:	C-Myc/DDK
Predicted MW:	33.1 kDa
Concentration:	>0.05 µg/µL as determined by microplate BCA method
Purity:	> 80% as determined by SDS-PAGE and Coomassie blue staining
Buffer:	25 mM Tris-HCl, 100 mM glycine, pH 7.3, 10% glycerol
Preparation:	Recombinant protein was captured through anti-DDK affinity column followed by conventional chromatography steps.
Note:	For testing in cell culture applications, please filter before use. Note that you may experience some loss of protein during the filtration process.
Storage:	Store at -80°C.
Stability:	Stable for 12 months from the date of receipt of the product under proper storage and handling conditions. Avoid repeated freeze-thaw cycles.
RefSeq:	<u><a href="#">NP_653164</a></u>
Locus ID:	22934



[View online »](#)

UniProt ID: [P49247](#)

RefSeq Size: 1834

Cytogenetics: 2p11.2

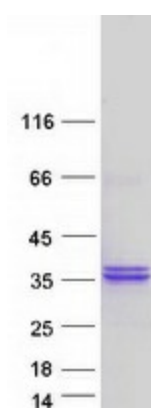
RefSeq ORF: 933

Synonyms: RPI; RPIAD

**Summary:** The protein encoded by this gene is an enzyme, which catalyzes the reversible conversion between ribose-5-phosphate and ribulose-5-phosphate in the pentose-phosphate pathway. This gene is highly conserved in most organisms. The enzyme plays an essential role in the carbohydrate metabolism. Mutations in this gene cause ribose 5-phosphate isomerase deficiency. A pseudogene is found on chromosome 18. [provided by RefSeq, Mar 2010]

**Protein Pathways:** Metabolic pathways, Pentose phosphate pathway

### Product images:



Coomassie blue staining of purified RPIA protein (Cat# TP302183). The protein was produced from HEK293T cells transfected with RPIA cDNA clone (Cat# [RC202183]) using MegaTran 2.0 (Cat# [TT210002]).